

# TASMANIAN STATISTICAL INDICATORS

EMBARGO: 11:30AM (CANBERRA TIME) MON 9 JULY 2001

## CONTENTS

	<i>page</i>
Notes .....	2
Main features .....	3
List of tables .....	8
SUBJECT AREAS	
<b>1</b> Population and demography .....	9
<b>2</b> Labour force .....	10
<b>3</b> Wages and prices .....	18
<b>4</b> Production .....	24
<b>5</b> Primary industry .....	25
<b>6</b> Building .....	29
<b>7</b> Finance .....	30
<b>8</b> Tourism .....	32
<b>9</b> Transport .....	34
<b>10</b> Retail trade .....	35
<b>11</b> Overseas trade .....	36
<b>12</b> Australia and State comparisons .....	38
<b>13</b> Tasmanian Statistical Divisions comparisons .....	40
ADDITIONAL INFORMATION	
Map: Tasmanian Statistical Divisions .....	42

- For further information about these and related statistics, contact the National Information and Referral Service on 1300 135 070 or Mary Eagle on Hobart 03 6222 5812.

## NOTES

### FORTHCOMING ISSUES

<i>ISSUE</i>	<i>RELEASE DATE</i>
August 2001	8 August 2001
September 2001	10 September 2001
October 2001	8 October 2001
November 2001	8 November 2001
December 2001	10 December 2001
January 2002	8 January 2002

### INTRODUCTION

1 This publication contains latest figures for a comprehensive range of economic indicators. Statistics shown in this publication are the latest available at the date of preparation and may be subject to revision in subsequent issues. Reference should therefore always be made to the latest issue or to the statistical publication on the specific subject.

### SEASONAL ADJUSTMENT AND TREND ESTIMATION

2 Seasonal adjustment is a means of removing the estimated effects of normal seasonal variation from the series so that the effects of other influences on the series can be more clearly recognised. Seasonal adjustment does not aim to remove the irregular or non-seasonal influences which may be present in any particular month. This means that month-to-month movements of the seasonally adjusted estimates may not be reliable indicators of trend behaviour.

3 The smoothing of seasonally adjusted series reduces the impact of the irregular components of the seasonally adjusted series and creates trend estimates. These trend estimates are derived by applying a 13-term Henderson-weighted moving average to all months except the last six. The last six monthly trend estimates are obtained by applying surrogates of the Henderson average to the seasonally adjusted series.

4 While this smoothing technique enables estimates to be produced for the latest month, it does result in revisions to the most recent months as additional observations become available. Generally, subsequent revisions become smaller and after three months have a negligible impact on the series.

5 ABS statistical series are being impacted by varying degrees as a result of The New Tax System (TNTS), introduced in Australia from 1 July 2000. TNTS includes the removal of Wholesale Sales Tax and the introduction of a Goods and Service Tax (GST), and as a result, a number of ABS data series will reflect significant and subsequent impacts. Further information can be found in *ABS Statistics and The New Tax System* (Cat. no. 1358.0).

### SYMBOLS AND OTHER USAGES

n.a.	not available
n.p.	not available for separate publication (but included in totals where applicable)
n.y.a.	not yet available
. .	not applicable
—	nil or rounded to zero
p	preliminary — figure or series subject to revision
r	figure or series revised since previous issue

Stevan R. Matheson  
Regional Director, Tasmania

## MAIN FEATURES

### THE LABOUR FORCE

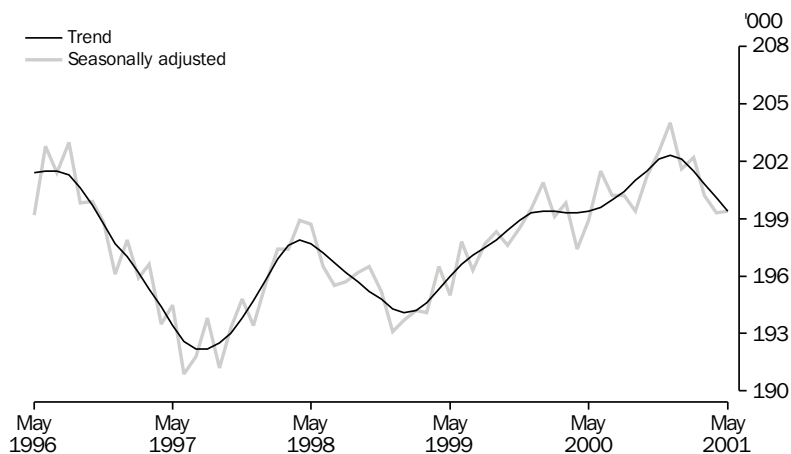
Trend estimates There were an estimated 218,000 persons (based on *trend* estimates) in the labour force in May 2001 and an estimated 372,300 civilian Tasmanians aged 15 years or more, yielding a labour force participation rate of 58.6%, compared to 59.0% in May 2000. The Australian labour force participation rate for May 2001 was 63.8%, compared to 63.7% in May 2000 (see table 39 and *Labour Force, Australia, Preliminary* (Cat. no. 6202.0)).

For Tasmanian males, the *trend* estimate of the participation rate was 67.6% in May 2001, compared to 67.4% in May 2000. For Tasmanian females, the trend estimate of the participation rate was 50.1% in May 2001, compared to 51.1% in May 2000 (see table 3).

### EMPLOYMENT

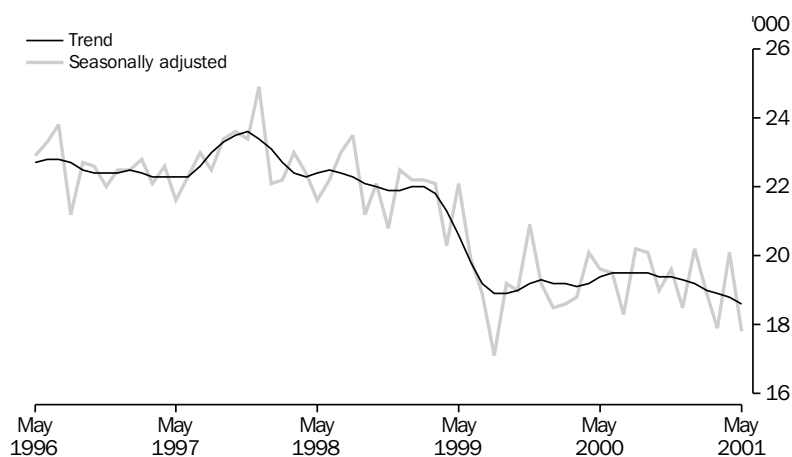
State comparisons

Trend estimates Tasmania's employment was the same in May 2001 as it was in May 2000. Employment over the period increased in Victoria by 2.5%; Western Australia, 1.2%; Queensland, 0.6%; and New South Wales, 0.4%; and decreased in South Australia by 0.5%. The increase in Australia's employment over the same period was 1.0% (see table 39 and *Labour Force, Australia, Preliminary* (Cat. no. 6202.0)).



## UNEMPLOYMENT

Trend estimates The *trend* estimate of the number of unemployed persons in Tasmania for May 2001 was 18,600, compared to 19,400 in May 2000. The *trend* estimate of the unemployment rate of 8.5% in May 2001 compares to 8.8% in May 2000. The Australian *trend* estimate of the unemployment rate was 6.8% in May 2001, compared to 6.4% in May 2000 (see table 3 and 39, and *Labour Force, Australia, Preliminary* (Cat. no. 6202.0)).



## BUILDING APPROVALS

Original terms There were 68 dwelling units approved during April 2001, including 65 new houses. The number of dwelling units approved during April 2001 was 22.7% below the March 2001 figure of 88, and 50.0% below the April 2000 figure of 136. The number of dwelling units approved in the 12 months to April 2001 (1,259) fell 28.1% from those approved in the 12 months to April 2000 (1,752).

At current prices, the value of total building was \$21.8 million in April 2001, 0.5% above the March 2001 figure of \$21.7 million and 15.2% below the April 2000 figure of \$25.7 million. Residential building contributed \$10.8 million and non-residential building \$11.0 million in April 2001 (see table 27 and *Building Approvals, Australia* (Cat. no. 8731.0)).

## NEW MOTOR VEHICLE REGISTRATIONS

Original terms There were 925 new motor vehicles (excluding motorcycles) registered in Tasmania during April 2001. This was 22.6% below the 1,195 registered in March 2001 and 1.3% below the April 2000 figure of 937. Of the new motor vehicles (excluding motorcycles) registered in April 2001, 732 were passenger vehicles, compared with 965 in March 2001 and 704 in April 2000 (see table 34).

## RETAIL

Trend estimates In *trend* terms, the estimate of retail turnover in Australia for April 2001 was \$13,414.3 million, 10.0% above the figure recorded in April 2000 (\$12,190.1 million). In *trend* terms, the estimate of retail turnover in Tasmania for April 2001 was \$296.7 million, 10.3% above the figure recorded in April 2000 (\$269.0 million) (see table 35 and *Retail Trade, Australia* (Cat. no. 8501.0)).

## LIVESTOCK SLAUGHTERING

Trend estimates Monthly movements of *trend* estimates showed slight decreases in both the cattle and calves and sheep and lambs slaughtering series, with cattle and calves down by 0.4% and sheep and lambs down by 0.7%. However the estimate for the number of pigs slaughtered was up by 3.5%.

In April 2001, the *trend* estimate for the number of cattle and calves slaughtered was 21,200. This was down by 7.2% on the estimated number for April 2000, and down by 6.0% on the number for April 1999.

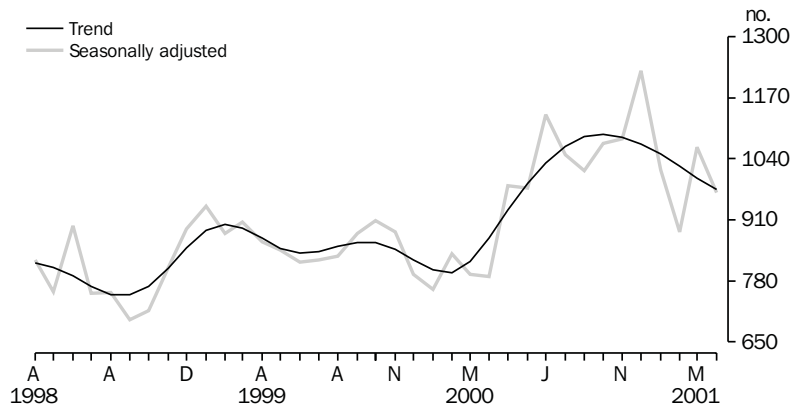
The *trend* estimate for the number of sheep and lambs slaughtered in April 2001 was 59,700. This was down by 31.0% on the estimate for April 2000, and down by 21.2% on the estimate for April 1999.

The *trend* estimate of 5,250 pigs slaughtered in April 2001 was 4.4% less than for April 2000 and 22.7% less than the *trend* estimate for April 1999 (See table 21).

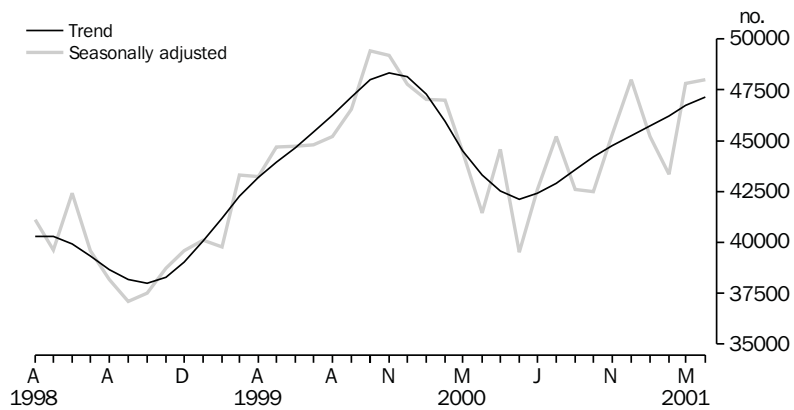
HOUSING FINANCE

Trend estimates The latest *trend* series for the number of housing finance commitments in Tasmania shows a decrease of 2.4% between March 2001 and April 2001. In comparison, the national *trend* series increased 0.9% from March 2001 to April 2001. The number of housing finance commitments in Tasmania peaked in October 2000. Between November 2000 and April 2001 the number of commitments has shown a decrease of 10.7%. In comparison, the national *trend* peaked in October 1999, before a decrease between November 1999 and June 2000. The national *trend* for the number of housing finance commitments increased by 11.9% from June 2000 to April 2001.

HOUSING FINANCE, TASMANIA, Number of dwellings



HOUSING FINANCE, AUSTRALIA, Number of dwellings



The latest *trend* series for the values of housing commitments for Tasmania has remained steady at \$72.0 million for the period January 2001 to April 2001. This 'plateau' in the *trend* series comes after a decline of 10.0% (from \$80.0 million) since August 2000. The national trend series shows the value of commitments have increased by 2.8% from March 2001 to April 2001 contributing to an overall increase of 12.4% from April 2000 to April 2001.

## OVERSEAS TRADE

The value of Tasmania's exports for the month of April 2001 was \$212 million, an increase of 1.4% over the month of March. Australia's exports for April 2001 totalled \$10,335 million, a decrease of 2.5% over the March figure.

Tasmania's major export destinations for the month of April were Japan (\$48.7 million), Korea (\$23.8 million), Hong Kong (\$19.8 million), Taiwan (\$19.7 million) and United States of America (\$19.4 million). Major commodity groups exported for the month were non-ferrous metals (\$74.7 million), metallic ores and metal scrap (\$18.2 million) and vegetables and fruit (\$13.5 million).

## LIST OF TABLES

<b>1</b>	Population	9
<b>2</b>	Births, deaths and marriages	9
<b>3</b>	Labour force status — Seasonally adjusted and trend	10
<b>4</b>	Labour force status by region, males	11
<b>5</b>	Labour force status by region, females	12
<b>6</b>	Labour force status by region, persons	13
<b>7</b>	Teenage labour market	14
<b>8</b>	All employed persons by occupation	15
<b>9</b>	Wage and salary earners, sector and industry	16
<b>10</b>	Average hours worked	16
<b>11</b>	Job vacancies	17
<b>12</b>	Industrial disputes	17
<b>13</b>	Average weekly earnings of employees — Original and trend	18
<b>14</b>	Indexes of total hourly rates of pay (excluding bonuses)	19
<b>15</b>	Summary of annual movements in wages and prices	20
<b>16</b>	House price index numbers	20
<b>17</b>	Consumer price index, Hobart and eight capital cities combined	21
<b>18</b>	Price index of materials used in building other than house building, Hobart	22
<b>19</b>	Production of selected commodities	24
<b>20</b>	Livestock slaughtering — Original	25
<b>21</b>	Livestock slaughtering — Seasonally adjusted and trend	25
<b>22</b>	Meat production	26
<b>23</b>	Principal mineral concentrates produced	26
<b>24</b>	Sawmills and plywood mills, logs delivered and timber produced	27
<b>25</b>	Chipping and grinding of wood	28
<b>26</b>	Logs delivered for milling or chipping	28
<b>27</b>	Building approvals — Original	29
<b>28</b>	Secured housing commitments — Original, seasonally adjusted and trend	30
<b>29</b>	Private new capital expenditure by type of asset — Original	30
<b>30</b>	Banking statistics	31
<b>31</b>	Accommodation establishments	32
<b>32</b>	National Parks, person entries	33
<b>33</b>	Tracks in National Parks, walker registrations	33
<b>34</b>	Registrations of new motor vehicles	34
<b>35</b>	Turnover of retail establishments at current prices — Original and trend	35
<b>36</b>	Value of overseas trade — Tasmania and Australia	36
<b>37</b>	Merchandise exports by country — Original	36
<b>38</b>	Merchandise exports by commodity — Original	37
<b>39</b>	Major Statistical Indicators — Australia and State comparisons	38
<b>40</b>	Major Statistical Indicators — Tasmanian Statistical Divisions	40



# 1

## POPULATION

	<i>Estimated resident population</i>	<i>Natural increase(a)</i>	<i>Net estimated migration gain</i>	<i>Total population growth</i>	<i>Annual growth rate(b)</i>
	'000	'000	'000	'000	%
<b>1997-98</b>	471.7	2.1	-3.9	-1.8	-0.38
<b>1998-99</b>	470.8	2.7	-3.6	-0.9	-0.19
<b>1999-2000</b>	470.4	2.2	-2.6	-0.4	-0.09
<b>1998</b>					
December qtr	471.6	0.7	-0.7	-0.1	-0.23
<b>1999</b>					
March qtr	471.1	0.7	-1.2	-0.5	-0.26
June qtr	470.8	0.7	-1.0	-0.3	-0.19
September qtr p	470.8	0.5	-0.5	0	-0.17
December qtr p	470.7	0.5	-0.5	-0.1	-0.17
<b>2000</b>					
March qtr p	470.6	0.6	-0.8	-0.1	-0.09
June qtr p	470.4	0.5	-0.8	-0.3	-0.09
September qtr p	470.2	0.5	-0.7	-0.2	-0.14
December qtr p	470.1	0.4	-0.4	0	-0.13

(a) Excess of live births registered over deaths registered (based on usual State of residence).

(b) Percentage growth from same quarter in previous year.

Source: Australian Demographic Statistics (Cat. no. 3101.0).

# 2

## BIRTHS, DEATHS AND MARRIAGES(a)

	<i>Births</i>		<i>Deaths</i>		<i>Infant mortality(b)</i>		<i>Marriages</i>	
	<i>no.</i>	<i>rate(c)</i>	<i>no.</i>	<i>rate(d)</i>	<i>no.</i>	<i>rate(e)</i>	<i>no.</i>	<i>rate(f)</i>
<b>1997-98</b>	5 870	1.76	3 766	6.6	38	6.5	2 782	5.9
<b>1998-99</b>	6 384	1.95	3 726	6.2	41	6.4	2 483	5.3
<b>1999-2000</b>	5 844	1.82	3 683	6.2	40	6.8	2 648	5.6
<b>1998</b>								
December qtr	1 567	..	907	..	8	5.1	658	..
<b>1999</b>								
March qtr	1 545	..	865	..	9	5.8	858	..
June qtr	1 636	..	923	..	15	9.2	636	..
September qtr p	1 555	..	1 035	..	16	10.3	327	..
December qtr p	1 367	..	905	..	9	6.6	678	..
<b>2000</b>								
March qtr p	1 512	..	864	..	7	4.6	910	..
June qtr p	1 410	..	879	..	8	5.7	733	..
September qtr p	1 405	..	954	..	6	4.3	364	..
December qtr p	1 376	..	1 012	..	8	5.8	582	..

(a) Usual residents of Tasmania.

(b) Deaths of children under one year of age.

(c) Total fertility rate. The sum of age specific fertility rates (live births at each age of a mother per female population of that age). It represents the number of children a woman would bear during her lifetime if she experienced age-specific fertility rates at each age of her reproductive life.

(d) Standardised death rate. The overall death rate, per 1,000 persons, that would have prevailed in a standard population if it had experienced at each age the death rates of the population being studied. The standard population used in these calculations is all persons in the 1991 Australian population.

(e) Rate per 1,000 live births.

(f) Crude marriage rate is the number of marriages registered during the financial year, per 1,000 estimated resident population at 31 December of that year.

Source: Australian Demographic Statistics (Cat. no. 3101.0).

## 3

## LABOUR FORCE STATUS(a) — SEASONALLY ADJUSTED AND TREND

	Seasonally adjusted series(b)				Trend series(b)			
	Employed	Unemployed	Unemployment rate	Participation rate	Employed	Unemployed	Unemployment rate	Participation rate
	'000	'000	%	%	'000	'000	%	%
MALES								
<b>2000</b>								
May	109.7	11.7	9.6	67.3	110.0	11.6	9.5	67.4
June	110.5	12.8	10.4	68.3	110.2	11.9	9.7	67.6
July	111.1	10.8	8.9	67.6	110.5	12.1	9.8	67.9
August	110.8	12.5	10.1	68.3	110.8	12.1	9.9	68.1
September	110.9	12.4	10.1	68.2	111.2	12.2	9.9	68.3
October	110.8	12.2	9.9	68.1	111.6	12.2	9.9	68.5
November	112.3	12.2	9.8	68.9	112.0	12.2	9.9	68.7
December	112.8	11.8	9.5	68.9	112.1	12.3	9.9	68.8
<b>2001</b>								
January	112.5	12.5	10.0	69.1	112.0	12.3	9.9	68.7
February	111.7	12.9	10.3	68.9	111.6	12.3	9.9	68.5
March	111.1	11.2	9.2	67.6	111.1	12.3	10.0	68.2
April	109.6	13.1	10.7	67.8	110.6	12.3	10.0	67.9
May	110.1	11.9	9.7	67.4	110.0	12.3	10.0	67.6
FEMALES								
<b>2000</b>								
May	89.2	7.9	8.1	51.0	89.5	7.8	8.0	51.1
June	91.0	6.7	6.9	51.3	89.4	7.6	7.9	51.0
July	89.1	7.5	7.8	50.7	89.5	7.5	7.7	50.9
August	89.4	7.7	7.9	50.9	89.6	7.4	7.6	50.9
September	88.6	7.7	8.0	50.5	89.7	7.3	7.5	50.9
October	90.4	6.8	7.0	51.0	89.9	7.2	7.5	50.9
November	90.3	7.3	7.5	51.1	90.1	7.2	7.4	50.9
December	91.2	6.6	6.8	51.2	90.2	7.0	7.2	50.9
<b>2001</b>								
January	89.2	7.8	8.0	50.7	90.1	6.9	7.1	50.8
February	90.5	6.0	6.3	50.5	89.9	6.8	7.0	50.6
March	89.1	6.7	7.0	50.1	89.7	6.6	6.9	50.4
April	89.8	7.0	7.2	50.6	89.5	6.5	6.8	50.2
May	89.4	6.0	6.3	49.8	89.4	6.4	6.6	50.1
TOTAL								
<b>2000</b>								
May	198.9	19.6	9.0	59.0	199.4	19.4	8.8	59.0
June	201.5	19.5	8.8	59.6	199.6	19.5	8.9	59.1
July	200.2	18.3	8.4	58.9	200.0	19.5	8.9	59.2
August	200.2	20.2	9.2	59.4	200.4	19.5	8.9	59.3
September	199.4	20.1	9.1	59.1	201.0	19.5	8.8	59.4
October	201.2	19.0	8.6	59.3	201.5	19.4	8.8	59.5
November	202.5	19.6	8.8	59.8	202.1	19.4	8.8	59.6
December	204.0	18.5	8.3	59.8	202.3	19.3	8.7	59.6
<b>2001</b>								
January	201.6	20.2	9.1	59.7	202.1	19.2	8.7	59.5
February	202.2	18.9	8.6	59.4	201.5	19.0	8.6	59.3
March	200.2	17.9	8.2	58.6	200.8	18.9	8.6	59.0
April	199.3	20.1	9.2	59.0	200.1	18.8	8.6	58.8
May	199.4	17.8	8.2	58.4	199.4	18.6	8.5	58.6

(a) For explanation of terms and concepts, refer to *Labour Force, Australia, Preliminary* (Cat. no. 6202.0). At April 2001, estimates for prior periods were revised because of some minor definitional changes.

(b) Seasonal factors are reviewed annually to take account of each additional year's data. The results of the review are used to compile revised seasonally adjusted and trend estimates each February. Trend estimates for the most recent months are also revised each month; see Notes on page 2.

Source: *Labour Force, Australia, Preliminary* (Cat. no. 6202.0).

# 4

## LABOUR FORCE STATUS BY REGION — MALES(a)(b)

	<i>Total employed</i>	<i>Total unemployed</i>	<i>Unemployment rate</i>	<i>Participation rate</i>
	'000	'000	%	%
HOBART AND SOUTHERN STATISTICAL DIVISIONS				
<b>1998</b>				
May	53.8	5.5	9.3	68.1
<b>2000</b>				
May	51.4	5.6	9.8	65.3
<b>2001</b>				
March	51.5	6.2	10.8	66.8
April	50.7	6.1	10.7	65.5
May	51.2	5.5	9.8	65.6
NORTHERN STATISTICAL DIVISION				
<b>1998</b>				
May	31.3	4.2	11.9	69.9
<b>2000</b>				
May	33.1	2.5	7.0	67.9
<b>2001</b>				
March	35.2	3.1	8.1	70.8
April	36.0	2.9	7.5	72.4
May	35.4	2.5	6.7	70.9
MERSEY-LYELL STATISTICAL DIVISION				
<b>1998</b>				
May	27.2	3.7	11.9	72.6
<b>2000</b>				
May	26.0	2.9	10.1	71.1
<b>2001</b>				
March	24.1	2.4	9.1	65.5
April	23.8	3.5	12.8	67.5
May	24.6	2.7	10.0	66.5
TASMANIA				
<b>1998</b>				
May	112.3	13.4	10.7	69.7
<b>2000</b>				
May	110.5	11.0	9.1	67.4
<b>2001</b>				
March	110.8	11.7	9.6	67.7
April	110.6	12.5	10.1	68.0
May	111.1	10.8	8.9	67.4

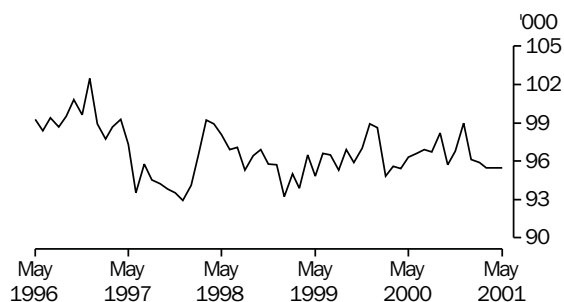
(a) For explanation of terms and concepts, refer to *Labour Force, Australia* (Cat. no. 6203.0).

(b) Data in this table are original series, i.e. they are not part of a seasonally adjusted or a trend series. Accordingly, care should be exercised when using these data.

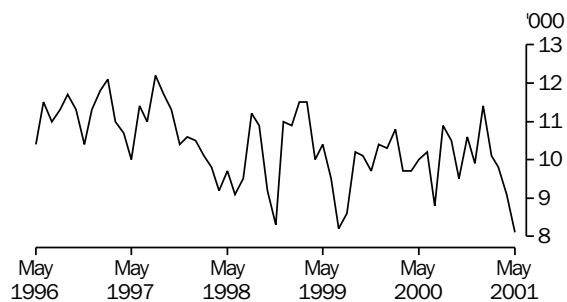
Source: *Labour Force, Selected Summary Tables, Australia* (Cat. no. 6291.0.40.001).

### Hobart and Southern Statistical Divisions — Persons (see table 6)

#### EMPLOYMENT



#### UNEMPLOYMENT



## 5

## LABOUR FORCE STATUS BY REGION — FEMALES(a)(b)

	<i>Total employed</i>	<i>Total unemployed</i>	<i>Unemployment rate</i>	<i>Participation rate</i>
	'000	'000	%	%
HOBART AND SOUTHERN STATISTICAL DIVISIONS				
<b>1998</b>				
May	44.3	4.2	8.6	52.8
<b>2000</b>				
May	45.0	4.4	9.0	53.5
<b>2001</b>				
March	44.0	3.5	7.4	50.9
April	44.8	3.1	6.4	51.5
May	44.3	2.5	5.4	50.4
NORTHERN STATISTICAL DIVISION				
<b>1998</b>				
May	24.6	2.4	8.8	50.0
<b>2000</b>				
May	25.7	1.8	6.7	49.3
<b>2001</b>				
March	26.9	2.2	7.5	52.9
April	27.8	1.5	5.2	52.6
May	28.0	1.1	3.9	52.6
MERSEY-LYELL STATISTICAL DIVISION				
<b>1998</b>				
May	18.6	1.6	7.7	46.5
<b>2000</b>				
May	19.3	2.1	9.7	50.7
<b>2001</b>				
March	18.1	1.9	9.6	46.8
April	18.7	2.0	9.8	48.7
May	18.0	2.3	11.2	47.5
TASMANIA				
<b>1998</b>				
May	87.6	8.1	8.5	50.6
<b>2000</b>				
May	89.9	8.4	8.5	51.6
<b>2001</b>				
March	89.0	7.7	7.9	50.5
April	91.3	6.6	6.7	51.2
May	90.4	6.0	6.2	50.4

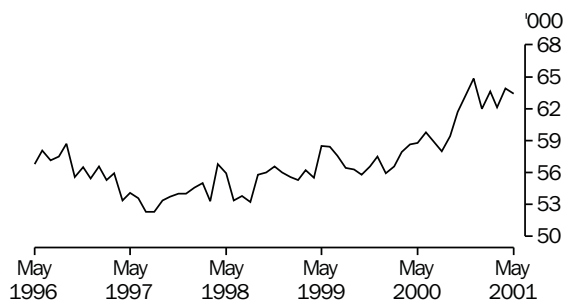
(a) For explanation of terms and concepts, refer to *Labour Force, Australia* (Cat. no. 6203.0).

(b) Data in this table are original series, i.e. they are not part of a seasonally adjusted or a trend series. Accordingly, care should be exercised when using these data.

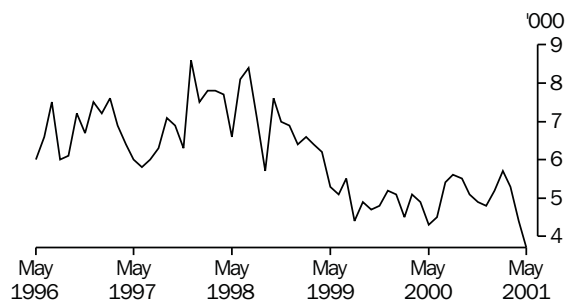
Source: *Labour Force, Selected Summary Tables, Australia* (Cat. no. 6291.0.40.001).

## Northern Statistical Division — Persons (see table 6)

## EMPLOYMENT



## UNEMPLOYMENT



## 6

## LABOUR FORCE STATUS BY REGION — PERSONS(a)(b)

	<i>Total employed</i>	<i>Total unemployed</i>	<i>Unemployment rate</i>	<i>Participation rate</i>
	'000	'000	%	%
HOBART AND SOUTHERN STATISTICAL DIVISIONS				
<b>1998</b>				
May	98.1	9.7	9.0	60.2
<b>2000</b>				
May	96.3	10.0	9.4	59.2
<b>2001</b>				
March	95.5	9.8	9.3	58.5
April	95.5	9.1	8.7	58.3
May	95.5	8.1	7.8	57.7
NORTHERN STATISTICAL DIVISION				
<b>1998</b>				
May	55.9	6.6	10.6	59.7
<b>2000</b>				
May	58.8	4.3	6.9	58.3
<b>2001</b>				
March	62.1	5.3	7.9	61.8
April	63.9	4.4	6.5	62.3
May	63.4	3.7	5.5	61.6
MERSEY-LYELL STATISTICAL DIVISION				
<b>1998</b>				
May	45.9	5.2	10.2	59.4
<b>2000</b>				
May	45.3	5.0	9.9	60.7
<b>2001</b>				
March	42.2	4.3	9.3	55.9
April	42.5	5.5	11.5	57.9
May	42.6	5.0	10.5	56.8
TASMANIA				
<b>1998</b>				
May	199.8	21.5	9.7	59.9
<b>2000</b>				
May	200.4	19.4	8.8	59.3
<b>2001</b>				
March	199.8	19.4	8.8	58.9
April	202.0	19.1	8.6	59.4
May	201.5	16.7	7.7	58.6

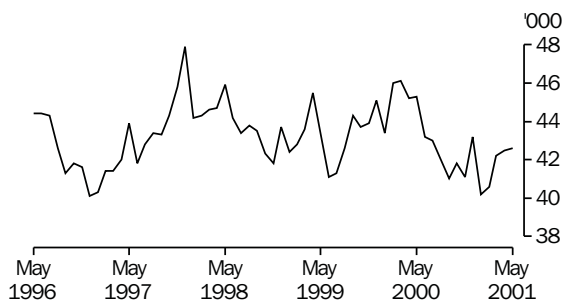
(a) For explanation of terms and concepts, refer to *Labour Force, Australia* (Cat. no. 6203.0).

(b) Data in this table are original series, i.e. they are not part of a seasonally adjusted or a trend series. Accordingly, care should be exercised when using these data.

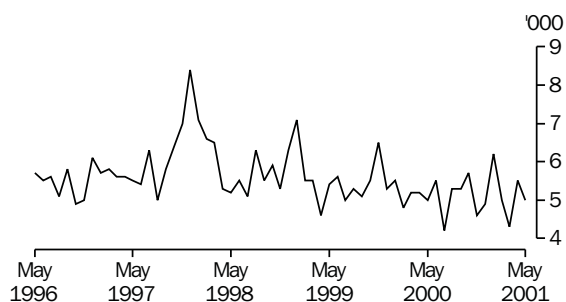
Source: *Labour Force, Selected Summary Tables, Australia* (Cat. no. 6291.0.40.001).

## Mersey-Lyell Statistical Division — Persons (see table 6)

## EMPLOYMENT



## UNEMPLOYMENT



## 7

## TEENAGE LABOUR MARKET(a)

	Employed		Unemployed		Labour force	Not in labour force	Civilian population aged 15-19	Unemployment rate	Unemployment population ratio	Participation rate
	Full time	Total	Looking for full time work	Total						
	'000	'000	'000	'000						
ATTENDING NEITHER A SCHOOL NOR A TERTIARY INSTITUTION FULL TIME										
<b>1998</b>										
May	6.7	9.1	2.4	2.5	11.6	1.1	12.7	21.5	19.6	91.2
<b>2000</b>										
May	6.6	8.5	2.6	2.7	11.2	1.3	12.6	24.0	21.4	89.4
<b>2001</b>										
March	6.0	9.1	1.8	1.8	10.9	0.9	11.8	16.5	15.2	92.7
April	6.3	9.9	1.5	1.7	11.6	1.7	13.3	14.8	12.9	87.2
May	6.4	9.3	1.4	1.5	10.8	1.2	12.0	13.8	12.4	89.9
ATTENDING SCHOOL OR A TERTIARY INSTITUTION FULL TIME										
<b>1998</b>										
May	—	6.6	0.3	1.3	7.9	13.8	21.7	15.9	5.8	36.3
<b>2000</b>										
May	0.1	5.8	0.5	2.3	8.1	14.1	22.2	28.3	10.3	36.6
<b>2001</b>										
March	0.1	6.5	0.1	1.9	8.4	14.4	22.8	22.4	8.2	36.8
April	0.1	6.8	0.4	1.7	8.5	12.7	21.2	19.8	7.9	39.9
May	0.1	7.5	0.2	1.1	8.6	13.9	22.5	12.8	4.9	38.2
TOTAL										
<b>1998</b>										
May	6.7	15.7	2.7	3.8	19.5	14.9	34.4	19.3	10.9	56.7
<b>2000</b>										
May	6.7	14.4	3.1	5.0	19.4	15.4	34.8	25.8	14.3	55.6
<b>2001</b>										
March	6.1	15.6	1.9	3.7	19.3	15.3	34.6	19.0	10.6	55.8
April	6.4	16.7	1.9	3.4	20.1	14.4	34.5	16.9	9.8	58.2
May	6.5	16.8	1.6	2.6	19.4	15.1	34.5	13.4	7.5	56.2

(a) Persons aged 15-19 years. For explanation of terms and concepts, refer to *Labour Force, Australia* (Cat. no. 6203.0). Care should be exercised when using these series as some estimates are subject to high sampling variability.

Source: ABS data available on request, *Labour Force, Estimates; Labour Force, Teenage Employment and Unemployment, Australia, Preliminary, Data Report* (Cat. no. 6202.0.40.001).

## 8

## ALL EMPLOYED PERSONS BY OCCUPATION(a)

	May 2000			May 2001		
	Persons	Males	Females	Persons	May 2000	Proportion of total employed
	'000	'000	'000	'000	%	May 2001
<b>Managers and administrators</b>						
Generalist managers	2.2	1.7	0.2	1.9	1.1	0.9
Specialist managers	4.0	3.6	1.2	4.8	2.0	2.4
Farmers and farm managers	7.5	5.0	1.7	6.7	3.7	3.3
<b>Total</b>	<b>13.6</b>	<b>10.4</b>	<b>3.0</b>	<b>13.4</b>	<b>6.8</b>	<b>6.6</b>
<b>Professionals</b>						
Science, building and engineering professionals	3.9	4.6	0.6	5.2	1.9	2.6
Business and information professionals	5.6	3.0	2.6	5.6	2.8	2.8
Health professionals	9.2	2.3	5.1	7.4	4.6	3.7
Education professionals	9.8	2.5	5.2	7.6	4.9	3.8
Social, arts and miscellaneous professionals	5.5	2.8	2.2	5.0	2.7	2.5
<b>Total</b>	<b>34.0</b>	<b>15.1</b>	<b>15.6</b>	<b>30.8</b>	<b>17.0</b>	<b>15.3</b>
<b>Associate professionals</b>						
Science, engineering and related associate professionals	2.7	2.4	0.5	2.9	1.3	1.4
Business and administration associate professionals	4.4	2.7	2.3	5.0	2.2	2.5
Managing supervisors (sales and service)	7.9	6.2	4.6	10.9	3.9	5.4
Health and welfare associate professionals	1.2	0.7	0.7	1.3	0.6	0.7
Other associate professionals	4.0	2.3	2.2	4.5	2.0	2.2
<b>Total</b>	<b>18.9</b>	<b>13.7</b>	<b>9.6</b>	<b>23.2</b>	<b>9.5</b>	<b>11.5</b>
<b>Tradespersons and related workers</b>						
Mechanical and fabrication engineering tradespersons	4.1	5.3	—	5.3	2.0	2.6
Automotive tradespersons	3.3	3.0	—	3.0	1.6	1.5
Electrical and electronics tradespersons	4.5	3.9	0.1	4.0	2.2	2.0
Construction tradespersons	5.4	5.3	—	5.3	2.7	2.7
Other tradespersons and related workers	10.6	6.1	2.7	8.8	5.3	4.3
<b>Total</b>	<b>27.8</b>	<b>23.7</b>	<b>2.7</b>	<b>26.4</b>	<b>13.9</b>	<b>13.1</b>
<b>Advanced clerical and service workers</b>						
Secretaries and personal assistants	2.7	—	2.8	2.8	1.4	1.4
Other advanced clerical and service workers	3.1	0.4	2.6	3.1	1.6	1.5
<b>Total</b>	<b>5.8</b>	<b>0.4</b>	<b>5.4</b>	<b>5.9</b>	<b>2.9</b>	<b>2.9</b>
<b>Intermediate clerical, sales and service workers</b>						
Intermediate clerical workers	18.6	5.1	17.4	22.5	9.3	11.2
Intermediate sales and related workers	3.3	2.2	1.2	3.4	1.7	1.7
Intermediate service workers	13.4	2.7	8.6	11.3	6.7	5.6
<b>Total</b>	<b>35.4</b>	<b>10.0</b>	<b>27.2</b>	<b>37.2</b>	<b>17.6</b>	<b>18.5</b>
<b>Intermediate production and transport workers</b>						
Intermediate plant operators	6.6	6.9	0.2	7.0	3.3	3.5
Intermediate machine operators	2.3	1.7	0.6	2.3	1.2	1.2
Road and rail transport drivers	6.5	6.9	0.6	7.5	3.3	3.7
Other intermediate production and transport workers	4.3	3.0	0.4	3.4	2.2	1.7
<b>Total</b>	<b>19.8</b>	<b>18.5</b>	<b>1.8</b>	<b>20.4</b>	<b>9.9</b>	<b>10.1</b>
<b>Elementary clerical, sales and service workers</b>						
Elementary clerks	1.7	1.0	1.2	2.2	0.9	1.1
Elementary sales workers	15.6	4.7	13.6	18.3	7.8	9.1
Elementary service workers	2.2	0.9	0.7	1.6	1.1	0.8
<b>Total</b>	<b>19.5</b>	<b>6.6</b>	<b>15.5</b>	<b>22.1</b>	<b>9.7</b>	<b>11.0</b>
<b>Labourers and related workers</b>						
Cleaners	6.1	1.9	4.2	6.1	3.0	3.0
Factory labourers	6.6	4.2	1.5	5.7	3.3	2.8
Other labourers and related workers	12.8	6.6	3.8	10.4	6.4	5.2
<b>Total</b>	<b>25.5</b>	<b>12.7</b>	<b>9.5</b>	<b>22.2</b>	<b>12.7</b>	<b>11.0</b>
<b>Total employed</b>	<b>200.4</b>	<b>111.1</b>	<b>90.4</b>	<b>201.5</b>	<b>100.0</b>	<b>100.0</b>

(a) For explanation of terms and concepts, refer to *Labour Force, Australia* (Cat. no. 6203.0).

Source: ABS data available on request, *Labour Force, Estimates*.

## 9

### WAGE AND SALARY EARNERS, SECTOR AND INDUSTRY(a)

	Employees, November 2000			Percentage distribution	
	Private	Public	Total	November 1999	November 2000
	'000	'000	'000	%	%
Agriculture, forestry & fishing	n.a.	0.6	0.6	0.4	0.4
Mining	1.5	—	1.5	0.8	0.9
Manufacturing	n.p.	n.p.	19.6	13.5	12.2
Electricity, gas & water supply	—	1.8	1.8	1.2	1.1
Construction	n.p.	n.p.	6.0	2.6	3.7
Wholesale trade	7.4	—	7.5	7.0	4.7
Retail trade	26.2	—	26.2	16.5	16.4
Accommodation, cafes & restaurants	11.5	—	11.5	6.3	7.2
Transport & storage	4.9	0.9	5.8	3.8	3.6
Communication services	n.p.	n.p.	2.6	1.4	1.6
Finance and insurance	3.9	0.2	4.1	2.5	2.6
Property & business services	12.3	0.5	12.9	7.2	8.1
Government administration and defence	—	8.7	8.7	6.0	5.4
Education	3.1	14.8	17.9	11.0	11.2
Health and community services	13.2	8.7	22.0	13.3	13.7
Cultural and recreational services	3.0	1.0	3.9	2.4	2.4
Personal and other services	4.9	2.7	7.6	4.3	4.7
<b>Total all industries</b>	<b>118.0</b>	<b>42.1</b>	<b>160.1</b>	<b>100.0</b>	<b>100.0</b>

(a) For explanation of terms and concepts, refer to *Wage and Salary Earners, Australia* (Cat. no. 6248.0).

Source: *Wage and Salary Earners, Australia* (Cat. no. 6248.0).

## 10

### AVERAGE HOURS WORKED

	Average weekly total hours worked, all employed persons(a)		
	Males	Females	Persons
<b>2000</b>			
February	37.1	24.7	31.6
May	38.9	28.1	34.1
August	38.1	26.7	33.0
November	39.5	27.6	34.2
<b>2001</b>			
February	38.5	26.2	33.0
May	40.4	27.3	34.5

(a) For explanation of terms and concepts, refer to *Labour Force, Australia* (Cat. no. 6203.0).

Source: ABS data available on request.



# 11

## JOB VACANCIES(a)(b)

	no. '000	rate(c) %
<b>1999</b>		
November	2.2	1.3
<b>2000</b>		
February	1.7	1.0
May	1.3	0.8
August	2.5	1.5
November	1.9	1.1
<b>2001</b>		
February	2.1	1.2

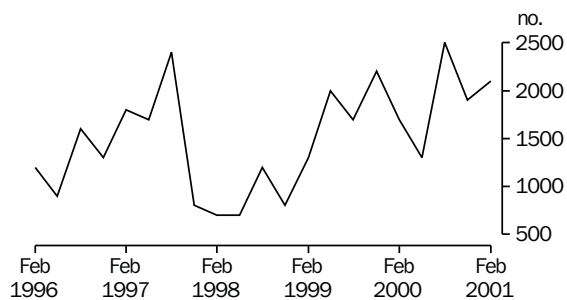
(a) For explanation of terms and concepts, refer to *Job Vacancies, Australia* (Cat. no. 6354.0).

(b) Care should be exercised in using these series as some estimates are subject to high sampling variability.

(c) Job vacancies expressed as a percentage of the number of employees.

Source: *Job Vacancies, Australia* (Cat.no. 6354.0).

### JOB VACANCIES



# 12

## INDUSTRIAL DISPUTES(a)

	Working days lost '000	Twelve months ended	Working days lost per thousand employees no.
<b>2000</b>			
March	0.2	March	4
April	0.2	April	5
May	0.2	May	6
June	0.2	June	6
July	—	July	6
August	—	August	6
September	—	September	6
October	—	October	6
November	—	November	6
December	0.2	December	7
<b>2001</b>			
January	—	January	6
February	—	February	6
March	—	March	5
<b>Twelve months ended</b>			
March 2001	0.9	—	—

(a) For explanation of terms and concepts, refer to *Industrial Disputes, Australia* (Cat. no. 6321.0).

Source: *Industrial Disputes, Australia* (Cat.no. 6321.0).

## AVERAGE WEEKLY EARNINGS OF EMPLOYEES(a) — ORIGINAL AND TREND

	<i>Full-time adult males</i>		<i>All males</i>	<i>Full-time adult females</i>		<i>All females</i>	<i>Full-time adult persons</i>		<i>All employees</i>
	<i>Weekly ordinary time earnings</i>	<i>Weekly total earnings</i>	<i>Weekly total earnings</i>	<i>Weekly ordinary time earnings</i>	<i>Weekly total earnings</i>	<i>Weekly total earnings</i>	<i>Weekly ordinary time earnings</i>	<i>Weekly total earnings</i>	<i>Weekly total earnings</i>
	\$	\$	\$	\$	\$	\$	\$	\$	\$
ORIGINAL									
<b>1999</b>									
November	761.00	801.60	682.50	641.30	658.90	433.90	719.00	751.50	554.90
<b>2000</b>									
February	767.70	799.30	686.20	639.60	656.70	444.20	723.90	750.60	566.70
May	788.10	828.20	695.80	643.40	659.10	428.00	737.20	768.80	558.10
August	784.20	819.60	677.60	645.40	660.90	422.90	736.50	765.10	547.40
November	784.60	824.70	683.20	663.40	685.10	431.00	741.30	774.80	549.50
<b>2001</b>									
February	786.20	819.50	678.00	676.90	688.80	462.00	745.80	771.20	568.40
TREND(b)									
<b>1999</b>									
November	758.40	792.50	675.70	632.40	647.20	432.60	714.00	741.50	552.20
<b>2000</b>									
February	771.90	807.10	684.80	639.40	655.60	434.60	725.30	754.10	558.30
May	782.20	818.90	689.10	644.70	662.30	431.00	735.20	765.00	557.90
August	786.30	824.50	688.00	651.50	669.10	429.90	740.00	770.70	554.80
November	785.40	823.50	681.70	660.30	676.70	435.90	740.40	771.00	553.80
<b>2001</b>									
February	782.00	817.70	672.50	669.70	683.60	446.50	738.10	767.30	554.90

(a) For explanation of terms and concepts, refer to *Average Weekly Earnings, Australia* (Cat. no. 6302.0).

(b) ABS trend estimates for the most recent months are revised, see Notes on page 2.

Source: *Average Weekly Earnings, Australia* (Cat. no. 6302.0).

	Index numbers				Percentage change		
	June qtr 2000	Sep qtr 2000	Dec qtr 2000	Mar qtr 2001	June qtr 2000 to Sep qtr 2000	Sep qtr 2000 to Dec qtr 2000	Dec qtr 2000 to Mar qtr 2001
	SELECTED INDUSTRIES(c)						
Manufacturing	107.0	107.6	108.5	109.2	0.6	0.8	0.6
Retail trade	106.5	108.0	108.9	109.1	1.4	0.8	0.2
Government administration and defence	105.4	106.8	107.5	107.9	1.3	0.7	0.4
Education	108.5	110.9	111.0	111.4	2.2	0.1	0.4
Health and community services	105.4	106.3	107.5	107.7	0.9	1.1	0.2
<b>All industries(d)</b>	<b>106.9</b>	<b>108.1</b>	<b>108.9</b>	<b>109.5</b>	<b>1.1</b>	<b>0.7</b>	<b>0.6</b>
SELECTED OCCUPATIONS							
Professionals	107.5	109.3	109.8	110.4	1.7	0.5	0.5
Associate professionals	106.9	107.9	109.7	110.2	0.9	1.7	0.5
Tradespersons & related workers	106.5	107.6	108.2	109.0	1.0	0.6	0.7
Intermediate clerical, sales & service workers	106.2	107.8	108.1	108.9	1.5	0.3	0.7
Intermediate production & transport workers	106.8	107.5	108.2	109.1	0.7	0.7	0.8
Elementary clerical, sales & service workers	109.3	109.9	110.9	111.3	0.5	0.9	0.4
Labourers & related workers	105.8	107.3	108.1	108.5	1.4	0.7	0.4
<b>All occupations</b>	<b>106.9</b>	<b>108.1</b>	<b>108.9</b>	<b>109.5</b>	<b>1.1</b>	<b>0.7</b>	<b>0.6</b>

(a) Base of each index: September quarter 1997 = 100.0.

(b) These indexes are a measure of quarterly changes in wage and salary costs for employee jobs. They are one of four sets of indexes that together comprise the Wage Cost Index. For explanation of terms and concepts, refer to *Wage Cost Index, Australia* (Cat. no. 6345.0).

(c) Industry is shown at the ANZSIC division level for selected divisions.

(d) Excludes Agriculture, forestry and fishing.

Source: ABS data available on request.

# 15

## SUMMARY OF ANNUAL MOVEMENTS IN WAGES AND PRICES(a), PERCENTAGE CHANGE FROM PREVIOUS YEAR

	CPI all groups-Hobart(a) %	Price index of materials used in house building all groups-Hobart %	Price index of materials used in building other than house building all groups-Hobart %	Average weekly total earnings, full-time adult employees(b) %
<b>1997-98</b>	-0.1	0.7	0.9	5.1
<b>1998-99</b>	1.0	1.0	0.9	2.4
<b>1999-2000</b>	1.9	1.3	0.4	2.5
<b>1999</b>				
March	0.5	0.7	0.7	3.4
June	0.4	-0.1	0.2	-0.3
September	0.4	-0.3	0.1	0.8
December	1.1	0.2	-0.2	2.3
<b>2000</b>				
March	2.6	2.0	0.6	0.6
June	3.3	3.4	1.2	6.5
September	6.5	(c)2.5	(c)-0.5	5.4
December	5.8	2.4	0.6	3.1
<b>2001</b>				
March	5.4	1.4	0.8	2.7

(a) See note 5 on page 2 of this issue on the impacts of The New Tax System (TNTS).

(b) March, June, September and December data relates to February, May, August and November survey dates as published in *Average Weekly Earnings, Australia* (Cat. no. 6302.0).

(c) This quarter affected by the removal of the Wholesale Sales Tax from 1 July 2000.

Source: Consumer Price Index, Australia (Cat. no. 6401.0); Price Index of Materials Used in House Building, Six State Capital Cities (Cat. no. 6408.0), (quarterly from June 1997); Price Index of Materials Used in Other than House Building, Six State Capital Cities (Cat. no. 6407.0), (quarterly from June 1997); Average Weekly Earnings, Australia (Cat. no. 6302.0).

# 16

## HOUSE PRICE INDEX NUMBERS(a)(b)

	Established house price index		Project home price index	
	Index	% change(c)	Index	% change(c)
<b>1997-98</b>	125.4	-2.4	123.3	—
<b>1998-99</b>	123.2	-1.8	123.3	—
<b>1999-2000</b>	129.0	4.7	126.2	2.4
<b>1999</b>				
March	123.7	1.6	123.3	—
June	123.6	-0.1	123.3	—
September	125.3	1.4	124.0	0.6
December	127.8	2.0	125.4	1.1
<b>2000</b>				
March	128.6	0.6	127.5	1.7
June	134.2	4.4	127.9	0.3
September	134.3	0.1	(d)140.3	(d)9.7
December	133.7	-0.4	140.3	—
<b>2001</b>				
March	133.8	0.1	140.5	0.1

(a) Base of each Index: 1989-90 = 100.

(b) Used in calculating the mortgage interest charges component of the Consumer Price Index.

(c) Percentage change over previous period.

(d) See note 5 on page 2 of this issue on the impacts of The New Tax System (TNTS) introduced on 1 July 2000.

Source: House Price Indexes: Eight Capital Cities (Cat. no. 6416.0).

Hobart

	Food	Clothing and Footwear	Housing	Household furnishings, supplies and services	Transportation	Alcohol and tobacco
<b>1998</b>						
March	121.7	105.5	95.3	119.4	121.7	158.0
June	122.3	105.3	95.5	119.5	120.5	160.2
September	124.7	105.1	95.6	120.4	120.4	159.6
December	125.0	105.7	95.4	120.8	118.6	159.1
<b>1999</b>						
March	125.5	104.7	95.8	119.5	118.4	161.5
June	126.8	104.6	95.9	119.4	120.4	160.0
September	126.3	104.5	96.9	119.3	123.1	158.1
December	127.5	103.9	97.4	119.1	123.8	163.3
<b>2000</b>						
March	127.8	104.9	98.8	120.2	126.6	167.2
June	129.1	105.0	99.2	121.2	129.3	169.9
September	130.9	112.8	105.5	124.5	133.3	179.8
December	132.0	112.9	105.8	124.6	130.4	181.6
<b>2001</b>						
March	134.3	110.7	106.9	125.6	131.4	185.4

Weighted average of eight capital cities

	Health	Education	Index, all groups	% change over previous period, all groups	Index	% change over previous period
<b>1998</b>						
March	178.6	190.0	121.5	0.2	120.3	0.3
June	183.0	190.0	122.0	0.4	121.0	0.6
September	190.4	190.0	122.8	0.7	121.3	0.2
December	187.7	190.0	122.7	-0.1	121.9	0.5
<b>1999</b>						
March	164.9	198.8	122.1	-0.5	121.8	-0.1
June	165.7	198.8	122.5	0.3	122.3	0.4
September	173.3	198.8	123.3	0.7	123.4	0.9
December	172.0	198.8	124.0	0.6	124.1	0.6
<b>2000</b>						
March	175.1	206.2	125.3	1.0	125.2	0.9
June	177.7	206.2	126.5	1.0	126.2	0.8
September	178.0	206.5	131.3	3.8	130.9	3.7
December	177.4	206.5	131.2	-0.1	131.3	0.3
<b>2001</b>						
March	181.5	215.1	132.1	0.7	132.7	1.1

(a) Base year: 1989-90 = 100.

(b) Further information on construction of CPI indexes is contained in the bulletin *Australian Consumer Price Index Concepts, Sources and Methods* (Cat. no. 6461.0).(c) As a result of the introduction of the 14th Series Australian CPI there have been changes to some groups and restructuring of some others. See Appendix A4 of the September quarter issue of *Consumer Price Index, Australia* (Cat. no. 6401.0) for more information.

(d) See Note 5 on page 2 of this issue on the impacts of The New Tax System (TNTS) introduced on 1 July 2000.

Source: *Consumer Price Index, Australia* (Cat. no. 6401.0).

*Index numbers for selected major building materials*

	<i>Structural timber</i>	<i>Clay bricks</i>	<i>Ready mixed concrete</i>	<i>Precast concrete products</i>	<i>Steel decking, cladding etc.</i>	<i>Structural steel</i>
<b>1997-98</b>	108.9	129.0	118.0	131.5	117.8	127.2
<b>1998-99</b>	109.1	130.8	119.5	131.6	110.8	128.0
<b>1999-2000</b>	114.4	129.1	118.1	131.6	109.6	128.8
<b>1999</b>						
March	108.9	131.1	120.4	131.5	110.3	128.1
June	109.2	130.8	117.9	131.5	110.3	128.1
September	108.2	126.9	119.4	131.6	113.7	128.8
December	111.7	126.9	118.0	131.6	104.6	128.8
<b>2000</b>						
March	116.9	130.9	117.5	131.6	110.1	128.8
June	120.7	131.6	117.5	131.6	109.8	128.8
September(b)	120.9	131.6	117.6	131.6	106.4	129.1
December	120.9	131.8	117.6	131.6	108.2	129.4
<b>2001</b>						
March	121.4	131.8	119.4	131.6	108.2	129.4

*Index numbers for selected major building materials*

	<i>Reinforcing steel bar, fabric and mesh</i>	<i>Aluminium windows</i>	<i>Fabricated steel products</i>	<i>Builders hardware</i>	<i>Sand and aggregate</i>	<i>Paint and other coatings</i>	<i>Non-ferrous pipes and fittings</i>
<b>1997-98</b>	112.7	107.2	114.7	113.7	124.5	127.3	164.3
<b>1998-99</b>	113.4	107.3	116.0	113.4	127.9	133.3	161.2
<b>1999-2000</b>	110.5	108.5	114.0	116.0	144.0	133.7	168.2
<b>1999</b>							
March	113.4	106.9	116.1	114.8	127.9	134.2	161.4
June	113.4	107.0	115.6	111.3	127.9	132.5	160.2
September	113.4	107.0	116.1	110.8	135.4	131.7	162.4
December	110.2	107.0	113.6	114.8	139.4	133.5	166.0
<b>2000</b>							
March	109.1	109.9	113.1	120.2	150.4	135.2	167.2
June	109.1	110.1	113.1	118.1	150.9	134.2	177.0
September(b)	107.8	110.1	113.1	117.3	145.5	131.8	177.2
December	107.9	116.6	113.0	118.8	146.1	135.7	183.8
<b>2001</b>							
March	107.8	120.3	116.1	119.6	151.6	136.2	193.1

(a) Base year: 1989-90 = 100.

(b) This quarter affected by the removal of the Wholesale Sales Tax from 1 July 2000.

Source: *Price Index of Materials Used in Other than House Building, Six State Capital Cities (Cat. no. 6407.0)*.

	<i>All electrical materials</i>		<i>All mechanical services</i>		<i>All plumbing materials</i>	
	<i>Index</i>	<i>% change over previous period</i>	<i>Index</i>	<i>% change over previous period</i>	<i>Index</i>	<i>% change over previous period</i>
<b>1997-98</b>	117.2	-0.2	117.0	—	121.9	-0.7
<b>1998-99</b>	115.8	-1.2	119.0	1.7	124.5	2.1
<b>1999-2000</b>	117.6	1.6	120.3	1.1	127.0	2.0
<b>1999</b>						
March	115.2	-1.4	119.4	0.3	124.4	0.2
June	115.2	—	119.5	0.1	124.5	0.1
September	115.9	0.6	119.3	-0.2	122.3	-1.8
December	117.5	1.4	119.8	0.4	126.5	3.4
<b>2000</b>						
March	118.3	0.7	120.3	0.4	128.0	1.2
June	118.7	0.3	121.9	1.3	131.0	2.3
September(b)	115.8	-2.4	117.3	-3.8	129.1	-1.5
December	117.6	1.6	118.0	0.6	131.8	2.1
<b>2001</b>						
March	117.8	0.2	118.4	0.3	136.0	3.2

	<i>All groups excluding electrical materials and mechanical services</i>		<i>All groups</i>	
	<i>Index</i>	<i>% change over previous period</i>	<i>Index</i>	<i>% change over previous period</i>
<b>1997-98</b>	118.0	1.0	117.4	0.9
<b>1998-99</b>	118.8	0.7	118.5	0.9
<b>1999-2000</b>	119.1	0.3	119.0	0.4
<b>1999</b>				
March	118.8	-0.2	118.5	-0.1
June	118.4	-0.3	118.3	-0.2
September	118.8	0.3	118.5	0.2
December	118.4	-0.3	118.4	-0.1
<b>2000</b>				
March	119.3	0.8	119.2	0.7
June	119.7	0.3	119.7	0.4
September(b)	118.8	-0.8	117.9	-1.5
December	120.1	1.1	119.1	1.0
<b>2001</b>				
March	121.7	1.3	120.2	0.9

(a) Base year: 1989-90 = 100.

(b) This quarter affected by the removal of the Wholesale Sales Tax from 1 July 2000.

Source: *Price Index of Materials Used in Other than House Building, Six State Capital Cities (Cat. no. 6407.0)*.

	Dairy products(a)			Staff hours worked	
	Whole milk(b)	Factory butter(c)	Factory cheese	Textile manufacturing(d)	Vegetable preserving
	million litres	tonnes	tonnes	'000	'000
<b>1997-98</b>	542.8	8 745	26 835	1 125	1 128
<b>1998-99</b>	603.4	11 546	29 973	1 061	1 084
<b>1999-2000</b>	608.6	8 209	33 344	1 032	1 019
<b>2000</b>					
April	38.0	363	2 857	75	88
May	29.7	232	983	107	107
June	17.5	465	683	83	90
July	12.9	r 266	r 333	82	80
August	26.1	r 210	r 990	100	97
September	62.0	r 203	r 3 611	75	62
October	71.0	r 865	r 3 590	97	62
November	84.1	r 1 080	r 4 078	96	100
December	72.9	r 1 101	r 4 039	60	86
<b>2001</b>					
January	62.1	277	3 383	50	65
February	49.1	387	2 665	83	97
March	44.1	484	3 058	74	94
April	41.8	n.y.a.	n.y.a.	53	90

	Refined zinc	Metallurgical refining	Electricity(f)
	'000 tonnes	Index(e)	million kW.h
<b>1997-98</b>	197.0	116.6	9 700
<b>1998-99</b>	214.3	125.0	9 910
<b>1999-2000</b>	231.7	133.2	10 050
<b>2000</b>			
April	18.7	133.8	..
May	18.7	136.4	..
June	18.7	137.2	(June qtr) 2 620
July	20.6	144.0	..
August	21.0	143.8	..
September	18.0	134.3	(Sept qtr) 2 760
October	20.5	145.1	..
November	18.5	136.2	..
December	12.5	126.0	(Dec qtr) 2 410
<b>2001</b>			
January	20.1	140.3	..
February	18.8	136.1	..
March	20.0	141.9	(Mar qtr) 2 360
April	19.3	137.0	..

(a) Source: Australian Dairy Corporation.

(b) Includes the whole milk equivalent of farm cream intake.

(c) Includes butter equivalent of butter oil.

(d) Includes spinning, weaving and carpet making. Reported by establishments which manufacture textiles only, or manufacture clothing and textiles in the one plant.

(e) Metallurgical refining index (Base year: 1979-80 = 100.0). Output from selected establishments covering the smelting and refining of ferro-alloys, zinc and aluminium. The weighting pattern is based on the establishments' value added as derived from the 1979-80 manufacturing Census. For multi product establishments, value added was apportioned to products on the basis of gross receipts from each product.

(f) Collected on a quarterly basis as from 1997.

Source: ABS data available on request.



## 20

### LIVESTOCK SLAUGHTERING — ORIGINAL

	Cattle					
	<i>Bulls, bullocks and steers</i>	<i>Cows and heifers</i>	<i>Calves</i>	<i>Sheep</i>	<i>Lambs</i>	<i>Pigs</i>
	'000	'000	'000	'000	'000	'000
<b>1997-98</b>	93.4	123.6	53.9	461.0	423.3	78.1
<b>1998-99</b>	94.8	116.3	61.0	439.9	480.1	81.2
<b>1999-2000</b>	109.0	108.9	62.1	589.9	456.3	70.1
<b>1999</b>						
April	8.9	11.3	1.9	36.4	44.4	6.8
<b>2000</b>						
April	8.3	8.5	1.4	53.1	32.3	4.9
May	9.0	11.6	1.7	48.2	37.5	5.7
June	9.1	12.9	0.9	51.5	44.1	6.7
July	7.0	6.7	1.2	23.0	36.2	5.0
August	5.7	3.7	15.2	17.9	39.1	4.8
September	6.2	4.3	22.9	18.7	37.9	4.8
October	5.9	5.8	5.6	24.3	32.2	4.1
November	7.1	6.9	0.9	20.7	31.0	4.0
December	9.4	9.6	0.2	35.0	40.7	5.3
<b>2001</b>						
January	8.8	7.7	0.2	41.0	32.1	3.8
February	9.5	9.2	0.1	47.6	33.1	4.2
March	10.5	10.8	0.6	55.1	37.8	5.7
April	6.5	8.6	1.1	28.4	25.8	4.9

Source: ABS data available on request.

## 21

### LIVESTOCK SLAUGHTERING — SEASONALLY ADJUSTED(a) AND TREND(b)

	Seasonally adjusted			Trend		
	<i>Cattle and calves</i>	<i>Sheep and lambs</i>	<i>Pigs</i>	<i>Cattle and calves</i>	<i>Sheep and lambs</i>	<i>Pigs</i>
	'000	'000	'000	'000	'000	'000
<b>1999</b>						
April	22.6	69.8	6.7	22.5	75.8	6.8
<b>2000</b>						
April	20.1	82.4	5.4	22.9	86.5	5.5
May	22.1	85.2	5.2	21.7	87.2	5.3
June	22.2	92.0	5.1	20.4	86.9	5.2
July	18.6	75.3	5.1	19.2	85.5	5.0
August	16.2	89.1	4.6	18.4	82.7	4.9
September	19.6	84.5	5.1	18.2	78.3	4.8
October	18.3	79.2	4.9	18.5	73.1	4.7
November	17.9	50.8	4.1	19.3	68.2	4.6
December	20.4	69.2	5.0	20.3	64.6	4.7
<b>2001</b>						
January	22.4	58.5	4.4	20.9	62.3	4.8
February	21.1	61.3	4.9	21.3	61.0	4.9
March	24.0	71.1	5.3	21.3	60.1	5.1
April	17.5	52.3	5.5	21.2	59.7	5.3

(a) Seasonally adjusted factors are reviewed annually to take account of each additional year's original data. The results of the review are used to compile revised seasonally adjusted and trend estimates; see Notes page 2.

(b) ABS trend estimates for the most recent months are revised; see Notes page 2.

Source: ABS data available on request.

## 22

### MEAT PRODUCTION(a)

	<i>Beef</i>	<i>Veal</i>	<i>Mutton</i>	<i>Lamb</i>	<i>Pigmeat(b)</i>	<i>Total</i>
	<i>tonnes</i>	<i>tonnes</i>	<i>tonnes</i>	<i>tonnes</i>	<i>tonnes</i>	<i>tonnes</i>
<b>1997-98</b>	53 064	1 149	9 841	8 072	4 916	77 041
<b>1998-99</b>	53 271	1 241	8 724	9 222	5 242	77 700
<b>1999-2000</b>	57 557	1 236	11 796	8 833	4 403	83 825
<b>1999</b>						
April	5 171	44	735	885	452	7 287
<b>2000</b>						
April	4 455	31	1 052	619	308	6 465
May	5 317	37	949	729	366	7 399
June	5 529	20	1 012	867	436	7 863
July	3 581	26	445	693	324	5 068
August	2 528	293	338	771	299	4 230
September	2 884	444	363	737	304	4 733
October	3 181	112	478	617	257	4 646
November	3 908	21	415	595	254	5 194
December	5 200	8	717	780	325	7 030
<b>2001</b>						
January	4 511	7	826	612	235	6 191
February	4 980	5	948	636	253	6 821
March	r 5 549	14	r 1 099	r 723	r 349	r 7 733
April	3 811	26	552	493	302	5 183

(a) Carcass weight.

(b) Includes pork used for production of bacon and ham.

Source: ABS data available on request.

## 23

### PRINCIPAL MINERAL CONCENTRATES PRODUCED

	<i>Copper</i>	<i>Iron (pellets)</i>	<i>Lead</i>	<i>Lead-zinc</i>	<i>Tin</i>	<i>Zinc</i>
	<i>'000 tonnes</i>	<i>'000 tonnes</i>	<i>'000 tonnes</i>	<i>'000 tonnes</i>	<i>'000 tonnes</i>	<i>'000 tonnes</i>
<b>1997-98</b>	109.6	820.8	84.6	26.2	16.2	335.4
<b>1998-99</b>	113.5	1 816.1	101.8	12.6	12.5	382.3
<b>1999-2000</b>	104.3	2 068.3	98.7	7.9	14.8	311.9
<b>1999</b>						
March	30.5	481.2	29.5	2.5	3.7	97.1
June	27.3	403.4	24.7	1.5	3.6	98.0
September	27.5	479.5	28.4	2.7	3.9	94.8
December	26.9	568.2	28.1	2.5	4.0	86.2
<b>2000</b>						
March	26.2	517.7	22.4	1.4	3.3	70.4
June	23.8	502.9	19.8	1.3	3.6	60.4
September	21.6	544.2	7.7	—	3.2	26.8
December	24.9	500.7	9.7	—	3.4	29.4
<b>2001</b>						
March p	n.y.a.	534.9	12.1	—	3.9	34.9

Source: Mineral Resources Tasmania, Department of Infrastructure, Energy and Resources.

	Tasmanian-grown logs delivered					Sawn, peeled and sliced timber produced(a)				
	Eucalypts	Hardwoods, excluding eucalypts(b)	Plant- ation(c)	Native soft- woods(d)	Total	Eucalypts	Hardwoods, excluding eucalypts(b)	Plant- ation(c)	Native soft- woods(d)	Total
		'000 m <sup>3</sup>	'000 m <sup>3</sup>	'000 m <sup>3</sup>			'000 m <sup>3</sup>	'000 m <sup>3</sup>	'000 m <sup>3</sup>	
<b>1997-98</b>	496.8	24.3	357.7	1.6	880.3	171.1	5.3	167.3	0.4	344.2
<b>1998-99</b>	499.9	22.6	351.9	1.0	875.4	159.7	5.1	169.7	0.3	334.8
<b>1999-2000</b>	510.1	28.8	396.2	0.9	936.9	169.7	5.3	190.6	0.4	366.0
<b>1999</b>										
March	110.8	9.7	90.7	0.2	211.4	35.4	0.8	42.6	—	78.9
June	124.6	6.1	91.3	0.3	222.3	39.6	1.7	43.1	0.1	84.5
September	136.0	6.3	109.4	0.2	252.0	46.2	1.3	49.1	0.1	96.8
December	132.5	5.1	87.8	0.2	225.6	45.8	1.5	46.5	0.1	93.9
<b>2000</b>										
March	104.3	10.0	100.7	0.4	215.3	37.8	1.3	47.8	0.1	87.0
June	137.3	7.3	98.2	0.2	243.1	39.8	1.3	47.3	0.1	88.3
September	130.7	5.0	103.8	0.3	239.9	42.4	1.7	46.6	0.1	90.9
December	118.1	4.3	82.7	0.2	205.2	41.6	1.3	41.4	—	84.3
<b>2001</b>										
March	105.3	6.7	91.9	1.8	205.6	37.2	1.5	42.4	0.1	81.2

(a) Includes plywood, veneer and sliced timber production converted to an equivalent cubic measurement.

(b) Includes blackwood, myrtle, sassafras etc.

(c) Radiata pine.

(d) Includes Huon pine, Celery top pine and King William pine.

Source: ABS data available on request.

## 25

### CHIPPING AND GRINDING OF WOOD(a)

	Producing locations(b)	Materials used(c)		Chipped and ground wood production '000 tonnes green weight
		Logs delivered(d)	Sawmill offcuts	
		no.	'000 m <sup>3</sup>	
<b>1997-98</b>	28	3 998.1	457.9	4 440.1
<b>1998-99</b>	29	3 459.6	373.4	3 929.9
<b>1999-2000</b>	30	4 526.8	452.5	5 145.3
<b>1999</b>				
March	29	862.9	79.2	997.7
June	29	925.9	94.9	1 061.1
September	30	1 056.8	134.1	1 225.3
December	30	1 103.8	96.4	1 207.3
<b>2000</b>				
March	30	1 152.1	104.6	1 308.7
June	30	1 214.1	117.4	1 404.0
September	31	1 259.5	104.0	1 451.7
December	30	1 328.2	120.3	1 420.6
<b>2001</b>				
March	30	1 177.9	89.4	1 236.4

(a) Both hardwoods and softwoods, separate details are not available.

(b) Capable of producing at end of year or actually producing during quarter.

(c) Data reported by weight, converted to cubic measure by the factor of 0.95 m<sup>3</sup> per tonne.

(d) Includes log equivalent of limbwood and billets.

Source: ABS data available on request.

## 26

### LOGS DELIVERED FOR MILLING OR CHIPPING

	Sawmilling and plywood milling			Chipping and grinding(a)			Total		
	Crown land(b)	Private land	Total	Crown land(b)	Private land	Total	Crown land(b)	Private land	Total
	'000 m <sup>3</sup>	'000 m <sup>3</sup>	'000 m <sup>3</sup>	'000 m <sup>3</sup>	'000 m <sup>3</sup>	'000 m <sup>3</sup>	'000 m <sup>3</sup>	'000 m <sup>3</sup>	'000 m <sup>3</sup>
<b>1997-98</b>	750.7	129.6	880.3	1 894.9	2 103.1	3 998.1	2 645.7	2 232.7	4 878.3
<b>1998-99</b>	754.2	121.2	875.4	1 562.6	1 897.0	3 459.6	2 316.7	2 018.2	4 334.9
<b>1999-2000</b>	834.4	101.6	935.9	2 440.5	2 086.3	4 526.8	3 274.9	2 187.8	5 462.7
<b>1999</b>									
March	184.1	27.3	211.4	367.0	495.8	862.9	551.1	523.2	1 074.3
June	196.2	26.1	222.3	432.1	493.8	925.9	628.3	519.9	1 148.2
September	221.8	30.2	252.0	554.0	502.7	1 056.8	775.8	532.9	1 308.7
December	202.5	23.1	225.6	643.1	460.7	1 103.8	845.6	483.8	1 329.4
<b>2000</b>									
March	192.1	23.2	215.3	585.3	566.9	1 152.1	777.3	590.1	1 367.4
June	218.0	25.1	243.1	658.1	555.9	1 214.1	876.1	581.0	1 457.1
September	219.7	20.2	239.9	729.7	529.8	1 259.5	949.4	550.1	1 499.4
December	184.3	20.9	205.2	779.7	548.5	1 328.2	964.0	569.5	1 533.5
<b>2001</b>									
March	181.1	24.5	205.6	651.7	526.3	1 177.9	832.8	550.8	1 383.6

(a) Logs used are generally below sawmilling standard: includes log equivalent of limbwood and billets.

(b) Comprises all areas (including concession areas) from which royalties are payable to Forestry Tasmania.

Source: ABS data available on request.

	Dwelling units						Non-residential buildings(d)		Value(e)
	New houses	New other residential buildings(a)	Other dwelling units created (conversions etc.)(b)	Total dwelling units	New dwelling units	Alterations and additions to residential buildings(c)	Private	Total	Total of all building
	no.	no.	no.	no.	\$m	\$m	\$m	\$m	\$m
<b>1997-98</b>	1 419	219	5	1 643	142.4	38.4	82.8	125.5	306.3
<b>1998-99</b>	1 297	104	9	1 410	131.2	36.8	115.8	174.6	342.6
<b>1999-2000</b>	1 608	230	55	1 893	193.4	50.7	120.7	160.6	404.7
<b>2000</b>									
April	122	12	2	136	13.8	3.9	2.3	8.0	25.7
May	159	45	29	233	25.7	8.0	10.7	17.1	50.8
June	84	4	3	91	10.3	4.3	6.4	16.7	31.2
July	83	—	1	84	7.9	2.6	4.3	7.3	17.7
August	82	—	1	83	8.9	4.1	4.7	10.7	23.7
September	100	19	—	119	12.7	2.2	21.5	23.2	38.1
October	105	16	—	121	13.5	4.5	9.5	12.6	30.7
November	112	4	—	116	12.2	3.5	9.6	13.1	28.8
December	53	4	—	57	6.3	3.2	9.4	12.4	22.0
<b>2001</b>									
January	89	2	2	93	9.5	3.3	1.9	16.5	29.4
February	83	23	—	106	11.2	4.2	3.3	4.1	19.5
March	84	4	—	88	9.5	4.1	5.3	8.1	21.7
April	65	3	—	68	7.5	3.3	7.4	11.0	21.8

(a) New individual dwelling units (e.g. flats, home units and villa units).

(b) From alterations and additions to residential building, conversions of non-residential building to residential building etc.

(c) Valued at \$10,000 and over. Includes conversions and dwelling units approved as part of alterations and additions or as part of the construction of non-residential building.

(d) Comprises non-residential building (new plus alterations and additions) valued at \$50,000 and over.

(e) Value data from July 2000 reference month onward are recorded inclusive of GST. See Cat. no. 8731.0 or page 2 of this publication for more details.

Source: *Building Approvals, Australia* (Cat. no. 8731.0).

	Total number of dwellings(a)			Total value of commitments(b)		
	Original	Seasonally adjusted	Trend	Original	Seasonally adjusted	Trend
	no.	no.	no.	\$m	\$m	\$m
<b>2000</b>						
April	751	790	871	61	68	70
May	1 135	982	932	87	75	73
June	946	978	987	71	77	76
July	1 101	1 134	1 031	81	82	79
August	1 147	1 049	1 066	86	81	80
September	948	1 015	1 087	71	75	80
October	1 075	1 073	r 1 092	78	78	78
November	1 162	1 082	r 1 086	83	79	76
December	1 095	1 228	r 1 071	75	80	74
<b>2001</b>						
January	899	1 017	r 1 050	58	64	72
February	875	884	r 1 024	65	65	r 72
March	1 131	1 065	r 999	84	r 77	r 72
April	957	969	975	73	76	72

(a) Includes new dwellings, established dwellings and refinancing. Excludes alterations and additions.

(b) Commitment is a firm offer of housing finance. It either has been, or is normally expected to be, accepted. Includes commitments to provide housing finance to employees and commitments accepted and cancelled in the same month. Excludes alterations and additions. Includes refinancing.

Source: Housing Finance for Owner Occupation, Australia (Cat. no. 5609.0).

	ASSET				INDUSTRY		
	Buildings and structures	Equipment, plant and machinery	Total asset	Mining	Manufacturing	Other selected industries	Total all industries
	\$m	\$m	\$m	\$m	\$m	\$m	\$m
<b>1997-98</b>	169	477	646	85	239	322	646
<b>1998-99</b>	130	345	475	48	144	283	475
<b>1999-2000</b>	70	385	456	53	128	275	456
<b>1999</b>							
March	30	85	115	10	38	67	115
June	35	89	124	13	44	67	124
September	14	83	97	10	35	52	97
December	15	98	114	8	33	73	114
<b>2000</b>							
March	14	74	88	14	25	49	88
June	28	130	157	20	36	101	157
September r	30	100	130	35	35	61	130
December	r 24	r 117	141	15	40	86	141
<b>2001</b>							
March	21	86	107	11	28	68	107

(a) Estimates based on a sample survey and therefore subject to sampling variability. Covers selected industries only — mining, manufacturing, finance, property and other selected industries.

(b) Current prices.

(c) See Cat. no. 5646.0 or page 2 of this issue on the impacts of The New Tax System (TNTS) introduced on 1 July 2000.

Source: Private New Capital Expenditure, State Estimates (Cat. no. 5646.0).

	<i>Deposits</i>					
	<i>Current bearing interest</i>	<i>Current not bearing interest</i>	<i>Fixed</i>	<i>Investment savings accounts</i>	<i>Statement savings accounts</i>	
	<i>\$m</i>	<i>\$m</i>	<i>\$m</i>	<i>\$m</i>	<i>\$m</i>	<i>\$m</i>
<b>2000</b>						
April	863	282	1 113	587	284	284
May	1 088	268	1 108	429	249	249
June	1 241	274	1 108	299	226	226
July	1 250	264	1 202	275	228	228
August	1 280	259	1 222	280	243	243
September	1 271	270	1 198	281	244	244
October	1 298	279	1 228	280	247	247
November	1 270	284	1 154	277	249	249
December	1 329	308	1 196	276	251	251
<b>2001</b>						
January	1 319	296	1 243	275	248	248
February	1 300	273	1 236	275	249	249
March	1 332	295	1 243	279	251	251
April	1 338	296	1 132	281	255	255

	<i>Deposits</i>				<i>Loans(b)</i>
	<i>Passbook/school savings accounts</i>	<i>Other</i>	<i>Total</i>		
	<i>\$m</i>	<i>\$m</i>	<i>\$m</i>	<i>\$m</i>	
<b>2000</b>					
April	80	83	3 292	5 021	5 021
May	54	84	3 281	5 116	5 116
June	37	84	3 269	5 128	5 128
July	39	83	3 341	5 229	5 229
August	39	86	3 408	5 143	5 143
September	40	89	3 392	5 099	5 099
October	39	88	3 459	5 103	5 103
November	39	85	3 359	5 147	5 147
December	39	85	3 484	5 195	5 195
<b>2001</b>					
January	39	87	3 508	5 222	5 222
February	39	91	3 463	5 254	5 254
March	39	98	3 536	5 232	5 232
April	39	92	3 433	5 228	5 228

(a) Details are the averages of weekly figures for each month. The figures are derived from returns submitted by banks authorised under the Banking Act together with similar returns voluntarily submitted by the State banks; they exclude the Reserve Bank.

(b) Excludes non-resident loans.

Source: Reserve Bank of Australia.

	<i>Establish- ments</i>	<i>Guest rooms</i>	<i>Bed spaces</i>	<i>Persons employed</i>	<i>Room nights occupied</i>	<i>Room occupancy rate</i>	<i>Guest nights</i>	<i>Bed occupancy rate</i>	<i>Guest arrivals</i>	<i>Takings from accommodation(c)</i>
	<i>no.</i>	<i>no.</i>	<i>no.</i>	<i>no.</i>	<i>'000</i>	<i>%</i>	<i>'000</i>	<i>%</i>	<i>'000</i>	<i>\$'000</i>
<b>LICENSED HOTELS WITH FACILITIES</b>										
<b>1999</b>										
December qtr	55	2 929	8 071	3 074	150.1	56.2	241.8	32.8	139.5	r 12 207
<b>2000</b>										
October	n.a.	n.a.	n.a.	n.a.	45.4	50.4	71.2	28.7	40.0	4 396
November	n.a.	n.a.	n.a.	n.a.	51.8	59.4	82.3	34.3	47.0	4 777
December	n.a.	n.a.	n.a.	n.a.	44.5	49.4	78.5	31.6	44.8	4 246
December qtr	54	2 906	8 007	2 880	141.7	53.0	232.0	31.5	131.8	13 420
<b>MOTELS AND GUEST HOUSES WITH FACILITIES</b>										
<b>1999</b>										
December qtr	51	1 752	5 431	735	84.2	52.2	161.6	32.3	96.0	6 822
<b>2000</b>										
October	n.a.	n.a.	n.a.	n.a.	25.9	49.8	47.5	29.3	26.5	2 160
November	n.a.	n.a.	n.a.	n.a.	29.4	58.4	54.6	34.8	31.3	2 464
December	n.a.	n.a.	n.a.	n.a.	25.0	48.1	50.5	31.2	29.7	2 228
December qtr	49	1 677	5 226	693	80.3	52.0	152.6	31.7	87.4	6 853
<b>SERVICED APARTMENTS</b>										
<b>1999</b>										
December qtr	24	865	3 487	419	50.0	62.9	104.2	32.5	47.7	5 264
<b>2000</b>										
October	n.a.	n.a.	n.a.	n.a.	15.2	55.8	31.8	31.8	12.9	1 710
November	n.a.	n.a.	n.a.	n.a.	16.6	62.9	34.1	35.2	14.8	1 793
December	n.a.	n.a.	n.a.	n.a.	15.8	57.8	37.7	37.7	16.0	1 927
December qtr	25	879	3 225	426	47.6	58.8	103.6	34.9	43.8	5 430
<b>TOTAL ESTABLISHMENTS</b>										
<b>1999</b>										
December qtr	130	5 546	16 989	4 228	284.3	56.0	507.5	32.6	283.2	24 293
<b>2000</b>										
October	n.a.	n.a.	n.a.	n.a.	86.5	51.1	150.6	29.5	79.4	8 267
November	n.a.	n.a.	n.a.	n.a.	97.7	59.6	171.0	34.6	93.1	9 034
December	n.a.	n.a.	n.a.	n.a.	85.2	50.3	166.6	32.7	90.5	8 401
December qtr	128	5 462	16 458	3 999	269.5	53.6	488.2	32.2	262.9	25 702

(a) Comprising establishments with 15 or more rooms or units. For explanation of terms and concepts refer to *Tourist Accommodation, Australia* (Cat. no. 8635.0).

(b) For the four quarters of 2000, the scope of the Survey of Tourist Accommodation (STA) has been expanded. Over this period the following accommodation sectors will be covered: hotels, motels, guest houses and serviced apartments with 15 or more rooms; holiday flats, units and houses operated by owners, managers or real estate agents who have sole letting rights to at least 15 flats, units or houses for short term letting; caravan parks with 40 or more powered sites, cabins, etc; and visitor hostels with 25 or more bed spaces.

(c) Takings from accommodation' after 1 July 2000 are recorded inclusive of GST. See Cat. no. 8635.0 or page 2 of this publication for more details.

Source: *Tourist Accommodation, Australia* (Cat. no. 8635.0). For more detailed information, see *Tourist Accommodation, Small Area Data, Tasmania* (Cat. no. 8635.6.40.001).



# 32

## NATIONAL PARKS, PERSON ENTRIES(a)

Tasmanian National Park attendance

	<i>Cradle Mountain(b)</i> <i>(Lake Dove)</i>	<i>Lake St Clair(b)</i> <i>(Cynthia Bay)</i>	<i>Freycinet(b)</i>	<i>Mt Field(b)</i>	<i>Narawntapu(c)</i> <i>(Bakers Beach)</i>	<i>Mole Creek Karst(d)</i> <i>(Marakoopa Cave)</i>	<i>Maria Island(e)</i> <i>(Darlington)</i>
	<i>no.</i>	<i>no.</i>	<i>no.</i>	<i>no.</i>	<i>no.</i>	<i>no.</i>	<i>no.</i>
<b>1999-2000</b>	200 700	111 600	r 290 000	130 700	33 200	29 460	13 213
<b>2000</b>							
May	8 300	5 500	r 11 900	5 600	1 100	1 350	603
June	8 600	3 300	r 9 000	6 000	1 400	1 576	526
July	6 600	2 800	10 000	5 200	1 000	1 023	62
August	7 600	2 600	10 600	6 300	1 200	1 140	313
September	10 600	6 200	16 500	9 800	2 100	2 354	929
October	11 400	6 900	15 100	9 200	2 600	1 798	748
November	15 000	9 400	21 700	11 000	3 600	2 454	1 224
December	21 200	11 700	32 500	15 200	5 100	3 910	1 394
<b>2001</b>							
January	32 000	20 400	53 900	23 200	6 000	4 203	2 492
February	20 300	15 000	36 100	15 600	3 800	2 277	1 650
March	22 900	15 700	30 800	15 000	3 500	2 397	1 719
April	22 400	11 500	24 700	15 400	2 600	2 635	1 442
May	8 900	6 000	11 500	7 200	n.y.a.	n.y.a.	535

(a) A 'person entry' occurs whenever a visitor enters a National Park. Freycinet data, in particular, reflects repeat entries. Measurement occurs at the designated sites in brackets.

(b) Estimated through a combination of traffic and booth counts.

(c) Estimated through traffic counts.

(d) Number of people taken on a guided tour.

(e) The sum of ferry arrivals and estimated plane passengers.

Source: Tasmanian Parks and Wildlife Service, Department of Primary Industries, Water and Environment.

# 33

## TRACKS IN NATIONAL PARKS, WALKER REGISTRATIONS(a)

	<i>Overland(b)</i>	<i>South Coast(c)</i>	<i>Freycinet(d)</i>	<i>Port Davey(c)</i>	<i>Frenchmans Cap</i>
	<i>no.</i>	<i>no.</i>	<i>no.</i>	<i>no.</i>	<i>no.</i>
<b>1999-2000</b>	7 240	1 011	2 784	272	807
<b>2000</b>					
May	111	2	39	—	15
June	104	1	65	—	20
July	p 33	3	89	2	15
August	p 55	—	35	—	5
September	p 117	12	163	4	27
October	p 146	p 14	113	p 1	5
November	p 584	p 60	216	p 11	41
December	p 1 193	p 172	489	p 39	106
<b>2001</b>					
January	p 1 637	p 285	695	p 53	207
February	p 1 385	p 211	414	p 52	167
March	p 1 089	r p 85	291	p 30	98
April	p 993	r p 40	307	r p 10	42
May	p 155	n.y.a.	94	n.y.a.	33

(a) Numbers include only walkers who registered and represented their intention.

(b) Sum of registrations at Cradle Mt and Lake St Clair. Registrations from July 2000 affected by trackhead relocation at Cradle Mt.

(c) Sum of registrations to walk the length of the track in any direction, irrespective of starting point.

(d) All overnight walkers registered in the park.

Source: Tasmanian Parks and Wildlife Service, Department of Primary Industries, Water and Environment.

	<i>Passenger vehicles</i>	<i>Other vehicles(b)</i>	<i>Total (excl. motor cycles)</i>	<i>Vehicles registered by vehicle rental businesses(c)</i>	<i>Motor cycles</i>
	<i>no.</i>	<i>no.</i>	<i>no.</i>	<i>no.</i>	<i>no.</i>
<b>1997-98</b>	13 232	2 740	15 972	2 544	542
<b>1998-99</b>	12 359	2 786	15 145	1 771	568
<b>1999-2000</b>	11 373	3 183	14 556	2 093	563
<b>2000</b>					
April	704	233	937	19	41
May	786	340	1 126	3	74
June	665	394	1 059	1	27
July	1 001	204	1 205	81	47
August	1 228	244	1 472	209	70
September	1 313	232	1 545	454	49
October	1 028	213	1 241	213	47
November	1 191	245	1 436	173	82
December	1 827	208	2 035	884	77
<b>2001</b>					
January	827	214	1 041	9	96
February	793	203	996	6	40
March	965	230	1 195	7	68
April	732	193	925	2	40

(a) Includes State and Commonwealth Government owned motor vehicles other than those belonging to the defence services. Excludes tractors, plant and equipment, caravans and trailers.

(b) Comprises utilities, panel vans, rigid and articulated trucks and other truck type vehicles (i.e. motor vehicles designed for purposes other than freight carrying, e.g. campervans, tow trucks, ambulances and hearses) and buses.

(c) These figures are included in previous columns.

Source: ABS data available on request from datacube: 9303.0.55.001 New Motor Vehicle Registrations (NMVR), Australia, Main Data.

	Trend							Total(d)	
	Original	Food retailing	Clothing and soft good retailing	Household good retailing	Recreational good retailing	Hospitality and services	Change from corresponding month of previous year		
	\$m	\$m	\$m	\$m	\$m	\$m	\$m	%	
<b>1997-98</b>	3 149.4	1 351.2	184.8	320.6	214.0	435.4	3 150.3	..	
<b>1998-99</b>	3 170.1	1 352.9	185.3	337.7	200.9	434.6	3 177.2	..	
<b>1999-2000</b>	3 278.4	1 398.1	163.2	366.3	211.0	475.4	3 254.3	..	
<b>2000</b>									
April	256.8	114.4	12.8	31.6	17.4	40.5	269.0	-0.9	
May	258.2	114.0	12.9	32.2	17.3	39.4	268.7	-1.2	
June	264.8	114.1	13.1	32.5	17.2	38.1	268.9	-1.2	
July	247.7	115.8	13.2	33.0	17.0	39.7	272.9	0.1	
August	261.6	117.0	13.6	32.8	17.0	38.9	274.0	0.3	
September	264.9	118.6	13.9	32.6	17.0	38.6	275.5	0.8	
October	274.7	120.4	14.0	32.6	17.2	38.7	277.6	1.6	
November	294.1	122.0	14.1	33.0	17.4	39.1	280.4	2.9	
December	372.5	123.5	14.1	33.8	17.7	39.6	283.7	4.4	
<b>2001</b>									
January	281.8	124.9	14.3	34.7	18.0	40.1	287.3	5.9	
February	265.5	126.3	14.5	35.7	18.2	40.6	290.8	7.5	
March	299.1	127.5	14.8	36.5	18.5	41.2	294.0	8.8	
April	280.5	128.5	15.1	37.2	18.6	41.7	296.7	10.3	

(a) Excludes motor vehicles, parts, petrol, etc.

(b) ABS retail seasonally adjusted and trend estimates for earlier periods are revised each month. See Cat. no. 8501.0 for more details.

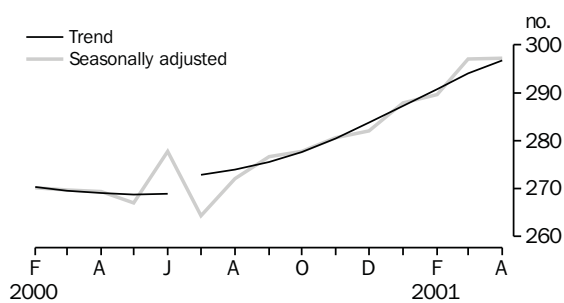
(c) Data from July 2000 reference month onwards are recorded inclusive of GST. See Cat. no. 8501.0 and page 2 of this publication for more details.

A break in the trend series occurred between June and July 2000 because of the impact of The New Tax System on Retail turnover.

(d) Includes Department stores and Other retailing.

Source: Retail Trade, Australia (Cat. no. 8501.0).

RETAIL TURNOVER, Tasmania



	Tasmania				Australia				
	Imports	Imports change over preceding period		Exports	Exports change over preceding period		Imports	Imports change over preceding period	
		\$m	%		\$m	%		\$m	%
<b>1997-98</b>	385	-3	2 136	25	90 684	15	87 768	11	
<b>1998-99</b>	407	6	2 019	-5	97 611	8	85 991	-2	
<b>1999-2000</b>	440	8	2 215	10	110 078	13	97 286	13	
<b>2000</b>									
April	33	-7	172	-13	8 004	-17	8 271	-6	
May	58	73	286	67	10 370	30	9 219	11	
June	33	-43	175	-39	10 436	1	9 193	—	
July	47	44	165	-6	9 755	-7	9 367	2	
August	56	19	182	10	10 716	10	9 374	—	
September	34	-40	167	-8	9 852	-8	9 779	4	
October	37	12	198	r 18	11 154	13	r 10 551	8	
November	59	58	r 283	r 43	11 006	-1	r 10 429	-1	
December	55	-7	r 221	-22	9 250	-16	r 10 300	-1	
<b>2001</b>									
January	45	-18	r 192	-13	9 230	—	r 8 321	-19	
February	30	-33	173	-10	8 321	-10	r 9 206	11	
March	48	60	r 209	r 21	9 934	19	r 10 604	15	
April	28	-42	212	1	9 581	-4	10 335	-3	

(a) It is difficult to get a complete picture of Tasmania's trade performance as imports recorded by the ABS include only goods imported directly into the State from overseas, and reported by the Australian Customs Service. Many of Tasmania's goods imported for direct consumption, or input into further processing industries, arrive via interstate ports, and are not included in this table.

(b) Includes re-exports.

Source: FASTRACCS.

## 37

## MERCHANDISE EXPORTS, BY COUNTRY — ORIGINAL

	European Community			East Asia					Total all countries
	United States of America	United Kingdom	Total European Community	Japan	Korea	Taiwan	Hong Kong	ASEAN(a)	
	\$'000	\$'000	\$'000	\$'000	\$'000	\$'000	\$'000	\$'000	
<b>1997-98</b>	176 175	25 063	338 791	549 048	67 801	150 405	132 551	399 472	2 136 171
<b>1998-99</b>	235 787	28 691	278 037	466 626	101 177	150 071	152 533	353 441	2 019 182
<b>1999-2000</b>	202 831	19 228	309 082	489 037	133 553	207 233	201 348	383 690	2 214 523
<b>2000</b>									
April	20 607	2 088	9 102	41 176	10 164	19 499	18 893	32 636	171 716
May	22 716	1 916	71 610	53 803	17 803	29 469	18 987	41 285	286 491
June	19 426	2 096	7 506	48 785	9 826	18 444	17 196	36 131	175 200
July	15 659	4 656	9 294	37 750	9 225	12 890	21 191	27 769	165 211
August	20 931	1 692	5 910	48 365	17 824	14 886	20 108	37 054	181 850
September	12 901	4 163	10 151	30 647	11 893	22 416	25 542	37 853	167 042
October	24 633	r 1498	r 19 191	45 135	16 749	15 747	r 9 390	r 33 927	r 197 837
November	12 959	7 233	12 991	r 44 258	17 672	24 775	r 21 497	r 36 863	r 283 308
December	10 652	4 172	12 748	r 70 487	18 139	r 14 875	26 852	r 31 875	r 220 686
<b>2001</b>									
January	19 608	1 218	9 265	r 45 628	10 167	r 21 067	r 28 183	r 27 182	r 192 430
February	19 153	r 2 303	r 17 177	r 42 857	14 478	r 10 273	r 16 153	r 29 664	r 173 467
March	r 22 420	r 1 318	r 18 463	r 35 930	12 610	r 20 600	r 25 959	r 35 930	r 209 242
April	19 147	3 008	18 314	48 719	23 757	19 687	19 801	36 365	211 738

(a) ASEAN member countries are: Brunei, Indonesia, Laos, Malaysia, Myanmar, Philippines, Singapore, Thailand and Viet Nam.

Source: FASTRACCS.

	<i>Meat and meat preparations</i>	<i>Dairy products</i>	<i>Fish, crustaceans and molluscs</i>	<i>Vegetables and fruit</i>	<i>Wood and woodchips(a)</i>	<i>Textile fibres and wastes</i>	<i>Metallic ores and metal scrap</i>
	\$'000	\$'000	\$'000	\$'000	\$'000	\$'000	\$'000
<b>1997-98</b>	71 918	133 675	141 205	55 242	311 359	29 641	254 054
<b>1998-99</b>	65 026	102 709	136 268	54 907	296 164	24 999	278 001
<b>1999-2000</b>	88 298	64 573	145 484	44 689	303 340	22 358	242 584
<b>2000</b>							
April	8 834	6 552	9 400	10 282	35 575	1 772	11 085
May	11 354	9 220	13 722	9 063	32 315	592	26 160
June	7 970	6 579	6 236	4 424	1 344	1 094	21 483
July	6 308	7 649	15 963	4 218	3 836	1 363	20 737
August	5 830	5 267	15 700	3 506	3 521	534	12 968
September	4 155	6 875	16 804	1 434	2 665	2 927	10 291
October	5 197	10 689	r 11 322	969	r 2 567	2 834	25 250
November	7 524	10 720	r 16 754	354	r 481	2 092	14 012
December	r 8148	10 536	21 261	r 613	4 901	3 258	33 759
<b>2001</b>							
January	9 339	8 678	17 421	r 938	2 109	1 423	12 862
February	9 101	10 073	r 12 292	r 2 832	r 199	722	17 019
March	r 8 060	r 8 427	r 17 152	r 6 473	r 4 914	r 5 764	r 19 848
April	7 458	6 007	9 721	13 523	2 051	70	18 206
	<i>Medical and pharmaceutical products</i>	<i>Paper and paperboard</i>	<i>Iron and steel</i>	<i>Non-ferrous metals</i>	<i>Road vehicles and transport equipment</i>	<i>Other and combined confidential items</i>	<i>Total all commodity groups</i>
	\$'000	\$'000	\$'000	\$'000	\$'000	\$'000	\$'000
<b>1997-98</b>	34 755	21 222	76 463	557 126	280 251	169 261	2 136 171
<b>1998-99</b>	52 330	4 130	95 265	544 311	173 015	192 057	2 019 182
<b>1999-2000</b>	67 353	9 932	10 216	681 903	213 836	319 958	2 214 523
<b>2000</b>							
April	8 133	773	100	55 293	1 520	22 397	171 716
May	6 711	1 664	694	63 631	64 934	46 429	286 491
June	5 613	596	782	64 109	521	54 450	175 200
July	7 800	377	458	47 490	251	48 760	165 211
August	10 757	594	234	61 675	136	61 127	181 850
September	7 097	364	386	62 659	397	50 989	167 042
October	10 686	228	161	61 648	1 017	r 65 269	r 197 837
November	12 732	310	366	74 040	89 019	r 54 904	r 283 308
December	3 576	58	530	74 769	4 585	r 54 692	r 220 686
<b>2001</b>							
January	8 551	145	275	r 71 034	1 514	r 58 144	r 192 430
February	9 434	73	429	65 732	2 046	r 43 516	r 173 467
March	r 15 862	634	r 259	r 66 752	2 256	r 52 841	r 209 242
April	5 202	158	438	74 695	2 952	71 255	211 738

Source: FASTTRACCS

	NSW	Vic.	Qld	SA	WA	Tas.	Aust.(a)
<b>Population</b>							
Estimated resident population, December 2000 ('000) p	6 502.6	4 797.4	3 597.2	1 500.5	1 897.4	<b>470.1</b>	19 277.1
Proportion of Australian population, December 2000 (%) p	33.7	24.9	18.7	7.8	9.8	<b>2.4</b>	100.0
Population growth rate, 12 months to December 2000 (%) p	1.1	1.3	1.7	0.3	1.4	<b>-0.1</b>	1.2
<b>Labour force</b>							
Employment growth, 12 months to May 2001 (trend series) (%)							
Males	-0.6	3.0	-1.0	-3.1	-0.2	—	0.2
Females	1.7	1.8	2.6	2.8	3.0	<b>-0.1</b>	2.0
Persons	0.4	2.5	0.6	-0.5	1.2	—	1.0
Unemployment rate (trend series), May 2001 (%)	5.7	6.3	9.0	7.3	7.2	<b>8.5</b>	6.8
Unemployment growth, 12 months to May 2001 (trend series) (%)	4.9	3.5	21.7	-8.4	20.2	<b>-4.1</b>	8.3
Participation rate (trend series), May 2001 (%)	62.5	64.0	65.5	60.2	67.1	<b>58.6</b>	63.8
Job vacancy rate, February 2001 (%)	1.4	1.4	0.8	1.2	1.4	<b>1.2</b>	1.3
Working days lost through industrial disputes, 12 months to March 2001 (days per '000 employees)	57	60	57	14	41	<b>5</b>	51
<b>Wages and prices</b>							
Average weekly total earnings, full-time adult employees (trend series) February 2001 (\$)							
Males	953.40	863.20	849.40	870.90	947.70	<b>817.70</b>	903.60
Females	761.80	747.10	694.40	707.70	717.40	<b>683.60</b>	741.20
Persons	881.50	822.10	796.40	812.90	868.40	<b>767.30</b>	844.70
Average weekly total earnings, full-time adult employees, growth (trend), 12 months to Feb 2001 (%)	3.1	3.0	5.7	6.8	5.3	<b>1.7</b>	4.0
Consumer price index, all groups, annual growth to March qtr 2000 (%) (b)	6.5	6.0	5.7	5.8	5.3	<b>5.4</b>	6.0
<b>Building</b>							
% change in the number of total dwelling units approved (original),							
— in the 12 months ended April 2001, over the same period previous year	-34.5	-29.4	-31.4	-33.7	-36.1	<b>-28.1</b>	-32.5
— April 2000 to April 2001	-26.3	-32.3	-33.9	-19.9	-5.2	<b>-50.0</b>	-26.3

For footnotes see end of table.

...continued

	NSW	Vic.	Qld	SA	WA	Tas.	Aust.(a)
<b>Private investment and retail trade</b>							
% change in private new capital expenditure, 12 months ended March 2000, over the same period previous year (original)	2.2	-7.4	-11.9	23.2	-6.2	<b>26.5</b>	-2.7
% change in trend estimates turnover of retail establishments, April 2001 (change from corresponding month of the previous year)	10.3	10.4	11.6	10.5	3.4	<b>10.3</b>	10.0
<b>Transport</b>							
% change in number of new motor vehicles (excluding motorcycles) registered in the 12 months ended April 2001, over the same period previous year	1.7	6.1	18.9	6.0	3.1	<b>4.5</b>	6.2
<b>Agriculture</b>							
% change in the number of livestock slaughtered 12 months ended April 2001 over the same period previous year (original)							
Cattle and calves	-0.7	-2.0	7.1	6.3	3.9	<b>-12.9</b>	2.2
Sheep and lambs	7.1	14.3	4.8	17.3	9.1	<b>-18.0</b>	10.0
<b>Tourism —room occupancy rates</b>							
Hotels, motels & guest houses, & serviced apartments with facilities, December quarter 2000 (%)	58.7	59.4	60.6	56.8	57.2	<b>53.6</b>	58.8
<b>Australian National and State Accounts</b>							
% change in Domestic (State) Final Demand(c), Chain Volume measures (trend series)							
Dec qtr 2000 to Mar qtr 2000	-1.2	0.4	0.7	1.4	1.1	<b>0.4</b>	0.2
Mar qtr 2000 to Mar qtr 2001	-1.5	1.2	0.3	4.1	-0.7	<b>1.0</b>	—

(a) Australian totals include the ACT and NT, with the exception of Agriculture, which excludes both.

(b) CPI applies to State capitals.

(c) Total of four types of expenditure: Private investment, Private consumption, Government investment, Government consumption.

	<i>Unit</i>	<i>Greater Hobart and Southern Statistical Divisions</i>	<i>Northern Statistical Division</i>	<i>Mersey-Lyell Statistical Division</i>	<i>Tasmania</i>
<b>Area, at 30 June 1996</b>	km2	25 521	19 935	22 507	67 964
<b>Population</b>					
Estimated resident population, 30 June 1996	no.	230 187	134 047	110 209	474 443
Estimated resident population, 30 June 1999	no.	228 855	133 016	108 390	470 261
Births 1999(a)	no.	2 937	1 717	1 345	6 032
Deaths 1999(a)	no.	1 823	1 111	834	3 783
<b>Labour force (original), May 2001</b>					
Total employed	no.	95 500	63 400	42 600	201 500
Total unemployed	no.	8 100	3 700	5 000	16 700
Unemployment rate	%	7.8	5.5	10.5	7.7
Participation rate	%	57.7	61.6	56.8	58.6
<b>Schools, 2000(b)</b>					
Government	no.	99	58	58	215
Non-government	no.	34	17	16	67
<b>Full-time equivalent School students, 2000(b)</b>					
Government					
Males	no.	15 415.8	9 395	7 805.3	32 616.1
Females	no.	14 865.6	9 492.4	7 597.5	31 955.5
Total	no.	30 281.4	18 887.4	15 402.8	64 571.6
Non-government					
Males	no.	5 825.2	2 479.1	2 022.2	10 326.5
Females	no.	6 132.9	2 423.5	1 919.2	10 475.6
Total	no.	11 958.1	4 902.6	3 941.4	20 802.1
<b>Educational qualification, 1996 Census(c)</b>					
Bachelor degree or higher(d)	no.	17 058	7 152	3 908	28 184
Undergraduate diploma	no.	5 893	3 268	2 181	11 374
Associate diploma	no.	3 773	1 902	1 466	7 184
Skilled vocational	no.	16 255	10 040	8 841	35 238
Basic vocational	no.	4 548	2 632	2 305	9 515
<b>Agriculture</b>					
Establishments with agricultural activity, 1998–99 season	no.	1 129	1 583	1 734	4 446
Total area of establishments	ha.	744 493	855 423	327 938	1 927 854
Crops, production, 1998–99 season					
Potatoes	tonnes	7 019	135 661	184 802	327 482
Onions	tonnes	949	13 527	45 996	60 471
Apples	tonnes	46 296	4 847	11 128	62 271
Barley	tonnes	8 180	19 327	2 537	30 044
Livestock, 1998–99 season					
Beef cattle	no.	77 760	191 042	222 641	491 443
Dairy cattle	no.	7 307	84 985	140 630	232 922
Sheep and lambs	no.	1 664 194	1 958 201	178 740	3 801 135
Pigs	no.	2 796	13 289	5 821	21 906
Gross value of agricultural production, 1998–99	\$m	147	249	305	700

For footnotes see end of table.

...continued



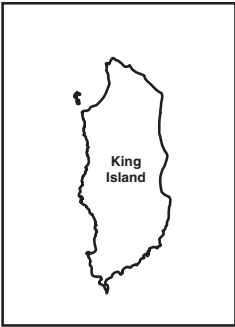
	<i>Unit</i>	<i>Greater Hobart and Southern Statistical Divisions</i>	<i>Northern Statistical Division</i>	<i>Mersey-Lyell Statistical Division</i>	<i>Tasmania</i>
<b>Business locations, September 1998</b>					
Locations with manufacturing activity					
Less than 20 employees	no.	424	327	257	1 008
20 or more employees	no.	83	67	48	198
Total	no.	507	394	305	1 206
Locations with retail activity					
Less than 20 employees	no.	2 046	1 346	1 133	4 525
20 or more employees	no.	82	43	35	160
Total	no.	2 128	1 389	1 168	4 685
<b>Building, 1999-2000</b>					
Total dwelling units approved	no.	1 037	537	319	1 893
Value of total residential building approved	\$'000	138 309	66 632	39 163	244 104
Value of total building approved	\$'000	226 094	115 050	63 554	404 699
<b>Dwellings, Census 1996(d)</b>					
Total dwellings	no.	98 815	57 467	45 529	201 820
Occupied private dwellings	no.	85 255	49 759	40 183	175 197
Fully owned	no.	34 338	21 563	18 359	74 260

(a) Births and deaths are based on usual residence year of registration. Total Tasmania includes usual residences other than Tasmanian Statistical Divisions.

(b) Source: DETYA and Tasmanian Department of Education.

(c) Total includes migratory statistical division.

(d) Includes higher degree, postgraduate diploma and bachelor degree.



# Statistical Divisions



Statistical Division NORTHERN

Local Government Area Dorset



Based on ASGC 1996  
Prepared by: Demography Section, ABS Hobart  
© Commonwealth of Australia, 1998



## FOR MORE INFORMATION...

- INTERNET* **www.abs.gov.au** the ABS web site is the best place to start for access to summary data from our latest publications, information about the ABS, advice about upcoming releases, our catalogue, and Australia Now—a statistical profile.
- LIBRARY* A range of ABS publications is available from public and tertiary libraries Australia-wide. Contact your nearest library to determine whether it has the ABS statistics you require, or visit our web site for a list of libraries.
- CPI INFOLINE* For current and historical Consumer Price Index data, call 1902 981 074 (call cost 77c per minute).
- DIAL-A-STATISTIC* For the latest figures for National Accounts, Balance of Payments, Labour Force, Average Weekly Earnings, Estimated Resident Population and the Consumer Price Index call 1900 986 400 (call cost 77c per minute).

**INFORMATION SERVICE**

Data which have been published and can be provided within five minutes are free of charge. Our information consultants can also help you to access the full range of ABS information—ABS user-pays services can be tailored to your needs, time frame and budget. Publications may be purchased. Specialists are on hand to help you with analytical or methodological advice.

- PHONE* **1300 135 070**
- EMAIL* **client.services@abs.gov.au**
- FAX* 1300 135 211
- POST* Client Services, ABS, GPO Box 796, Sydney 1041

## WHY NOT SUBSCRIBE?

ABS subscription services provide regular, convenient and prompt deliveries of ABS publications and products as they are released. Email delivery of monthly and quarterly publications is available.

- PHONE* 1300 366 323
- EMAIL* subscriptions@abs.gov.au
- FAX* 03 9615 7848
- POST* Subscription Services, ABS, GPO Box 2796Y, Melbourne 3001



2130360007017  
ISSN 1034-1803

RRP \$20.00